

1574 Druid Road South Supplemental Materials for Historic Improvements

- **Structural Systems:** The current home is a wood frame home with masonry and wood crawl space foundation. No modifications to the structural system are planned. Reinforce and fortify the foundation as may be necessary. The garage will be constructed with wood frame and concrete slab. **See Plans A-17 through A-19.**
- **Roofs and Roofing:** The current roof is gable/hip. The main house and guest house roofs were replaced in 2012 and 2014 respectively. The garage roof will be constructed to match the guest house and main house. The trusses and supports appear to be in sound condition. All roofing will be repaired and reinforced as necessary. **See Architectural Plans A-13 through A-19.**
- **Windows and Doors:** Most, if not all, of the exterior windows and doors are beyond repair due to water damage, termite damage, rot, and broken panes. All exterior doors and windows will be replaced by like-kind, impact resistant windows and doors to meet current Code. See figures 1.0 and 1.1. **See Windpact Manufacturers Guide enclosed**
- **Materials:** The cedar siding on the main home is water damaged and rotted throughout. An inspection of the wood studs showed significant damage. The plan is to replace all cedar wood siding and trim with James Hardie Flat planks of similar width, look, and color. Brick/masonry front porches and side corridors will be constructed in red rehabbed brick per drawings. The side porches will be wood wrapped to match the current façade. The balconies will be brick tile. All supports will be wood. The back steps to the second floor will be wood or Azek composite decking to match the original style. Reused Cedar wood siding will be used for the guest house and garage. The broken concrete driveway will be replaced with rehabbed brick pavers. The front shrubs and palm in the center of the driveway will be removed. **See figures 2.0, 2.1, and 2.2. See James Hardie Guide enclosed.**
- **Porches, Awnings, Steps and Fences:** The concrete driveway will be replaced with rehabbed brick pavers. Landscaping in the front of the house, including the Palm tree, will be removed and replaced with a circular rehabbed brick driveway. The Porte Cochere is not repairable and will be removed. A front porch will be constructed on both the lower and upper levels of the front of the house with columns to match the columns on the side porches. The front porches will wrap around and connect to the side porches. Rehabbed brick will be used on the ground level of the side corridors. Wood and composite decking (white) will be used to match the current look. The decayed window treatments will be removed. Brick columns and wrought Iron fencing and gates to be used around the perimeter of the property are planned for the future, but are not part of the scope of this work. The front brick columns located at the driveway entrance, and the brick columns in the rear of the house at the bottom of the stairway will be repaired and made level. The brick stairway in the rear of the home will be restored to its original condition. A covered walkway made of white wood and brick pavers will be built from the main home to the guest home. **See figures 3.0, 3.1, 3.2, 3.4, & 3.17.**

- **Painting and Finishes:** All siding and window trim will be white to match the existing and historic appearance. All trim will match the current look and a front porch will be added. The window and door trim and lighting will be consistent with the current appearance.
- **Environmental Features:** Existing grade will be maintained except where modifications to the level and slope of the groundwater/storm water away from the home is necessary. Dead or dangerous landscaping/tree conditions will be removed. All invasive growth, brush, and dead organics will be cleared and disposed of. The deteriorated and dangerous concrete driveway will be replaced with reused brick. **See figures 3.5 through 3.16.**





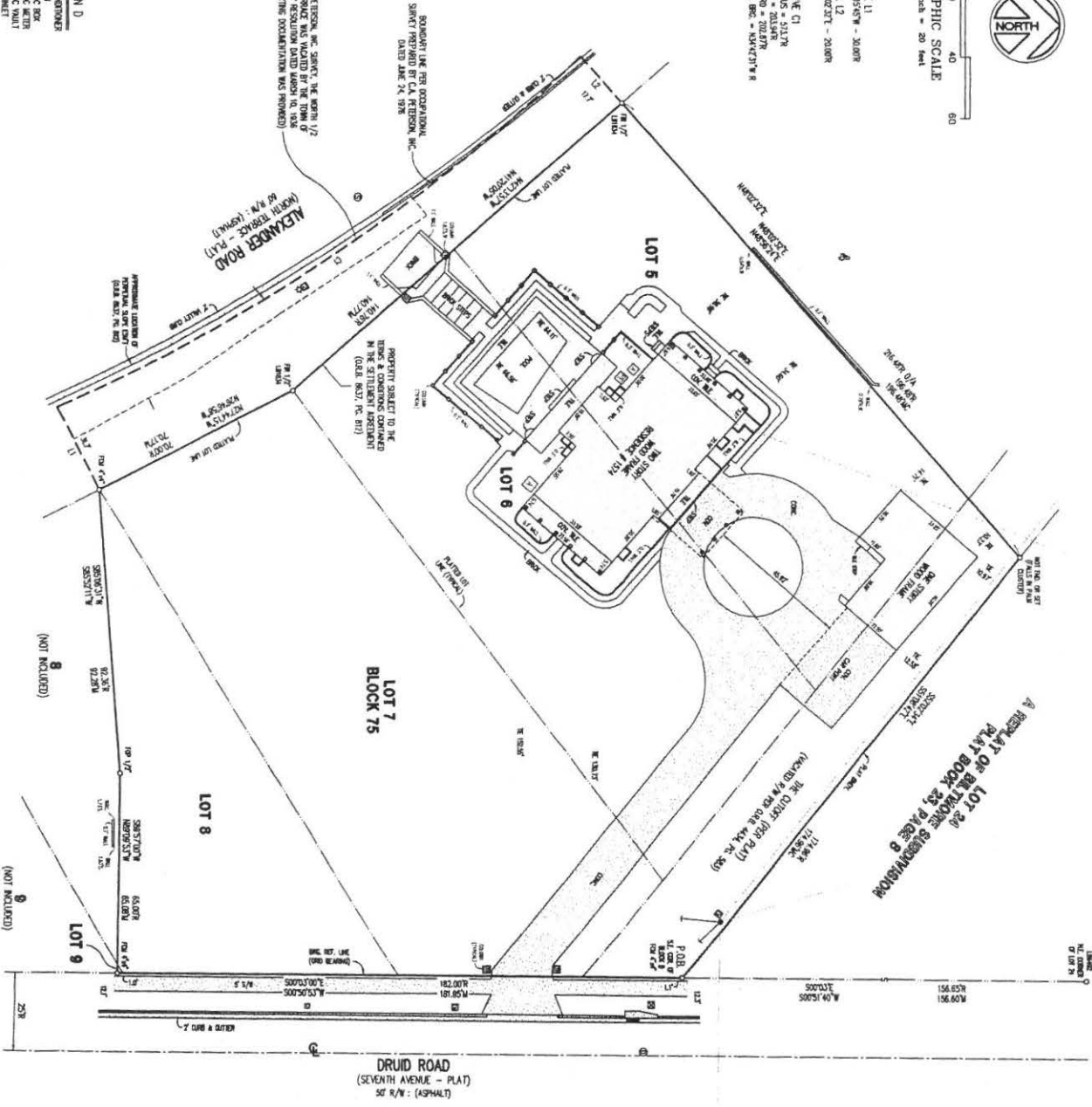
GRAPHIC SCALE
1 inch = 20 feet

LINE 11
562°54'W - 30.00'
LINE 12
M40°22' - 20.00'
CURVE C1
RADIUS = 5117
ARC = 50.54°
CHORD = 1042.71'
CHORD BEAR = 104°42'11" E

AS PER C.A. PETERSON, INC. SURVEY, THE NORTH 1/2
OF SECTION 8, T4N, R10E, S10W, IS
RELIEVED BY RESOLUTION DATED MARCH 10, 1938
(NO SUPPORTING DOCUMENTATION WAS PROVIDED)

LEGEND

- - AIR CONDITIONER
- - CLOAK
- - DRAINAGE
- - ELECTRIC METER
- - ELECTRIC VALVE
- - GAS METER
- - HOT WATER
- - LAUNDRY
- - POWER POLE
- - SANITARY SEWER MANHOLE
- - SANITARY SEWER MAINLINE
- - STORM SEWER MANHOLE
- - STORM SEWER MAINLINE
- - CITY WATER



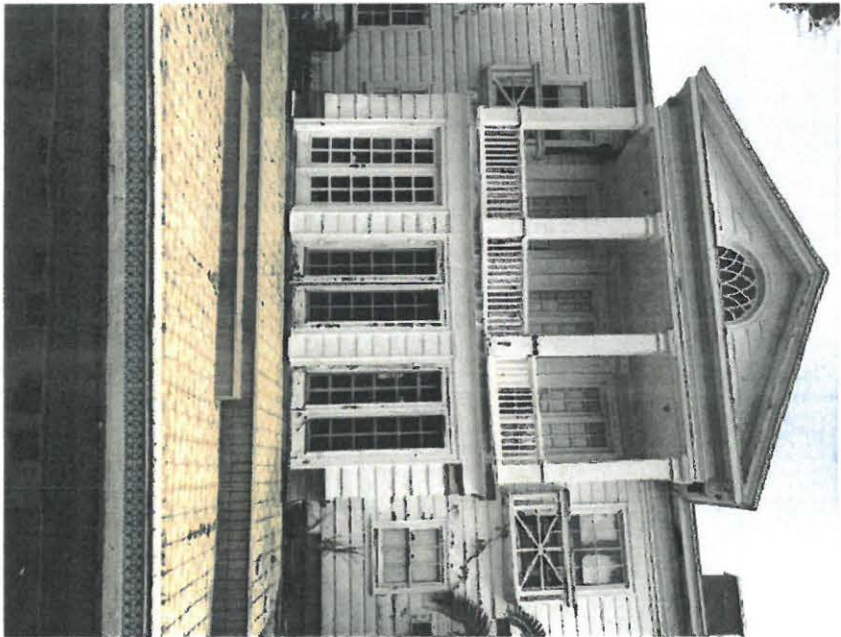
NOTES CORRESPONDING TO SCHEDULE B, SECTION I

SURVEY ABBREVIATIONS

Plat



Current view from
Street



Current Rear View



Current Front View



Current West View + Guest
HOUSE

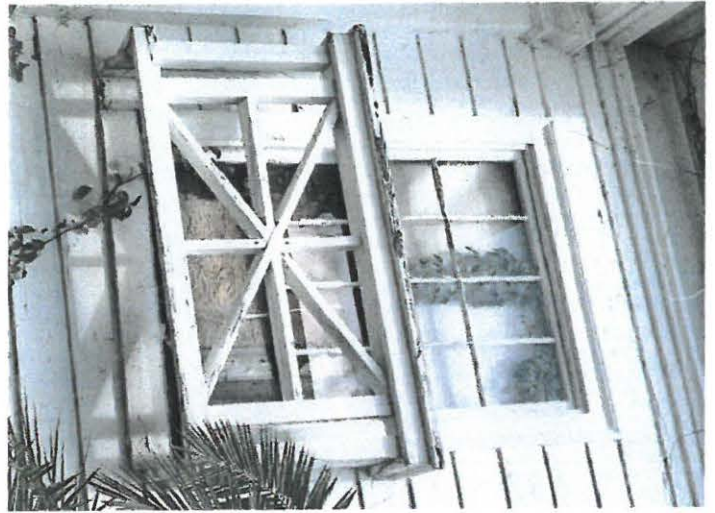


figure 1.0

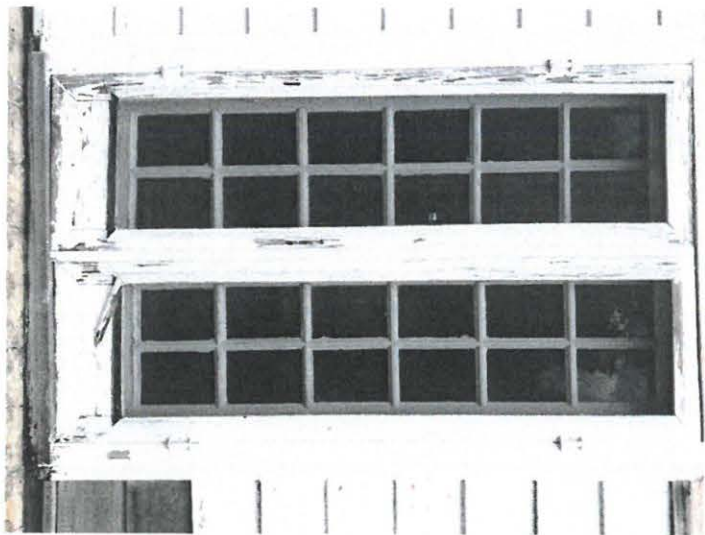


Figure 1.1

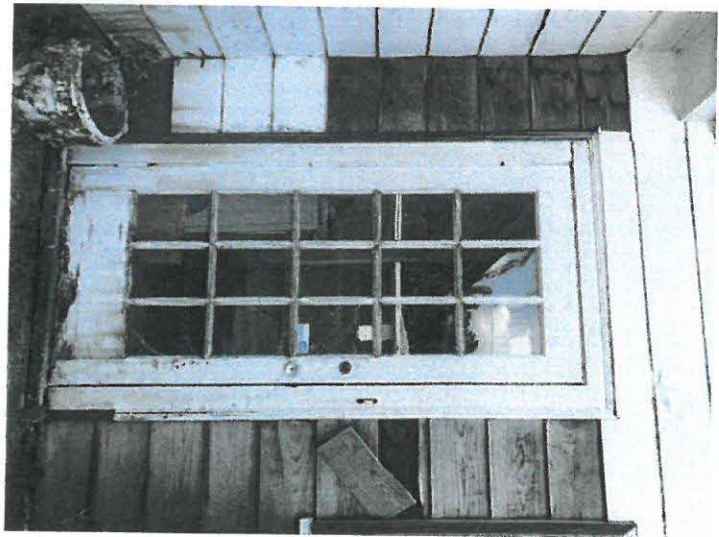
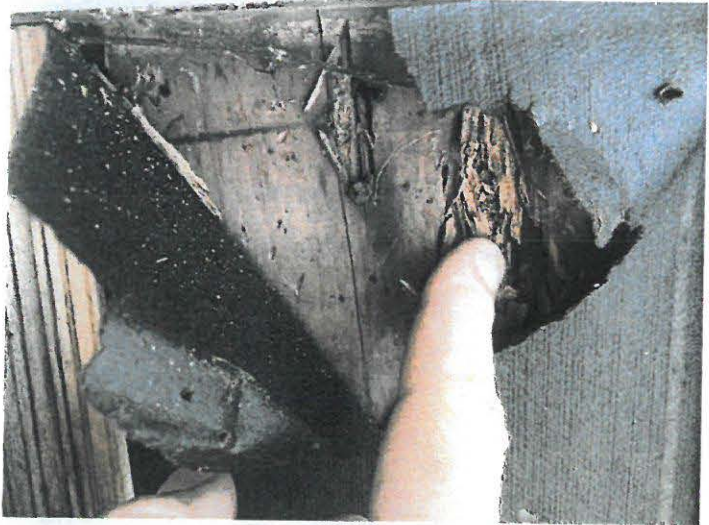


figure 1.1
↓ 2.0



figure 2.1

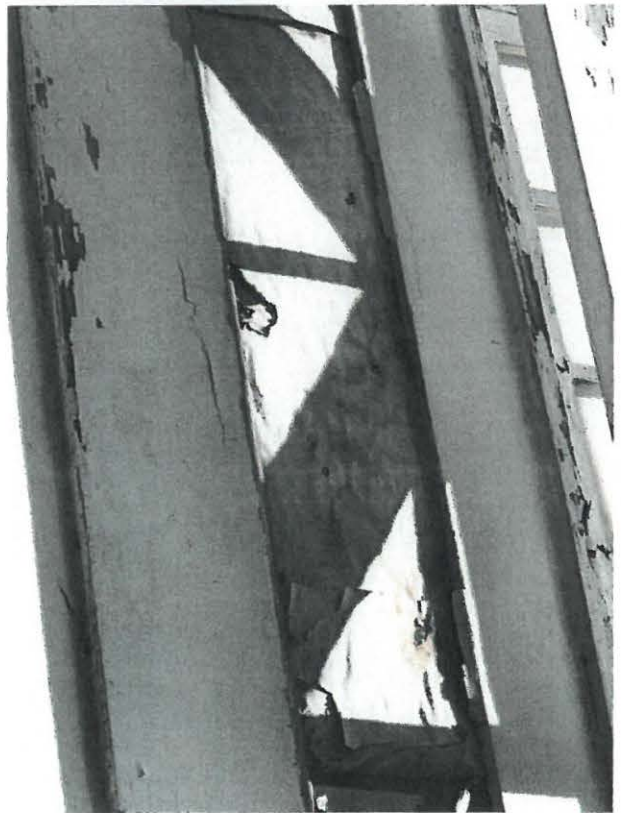
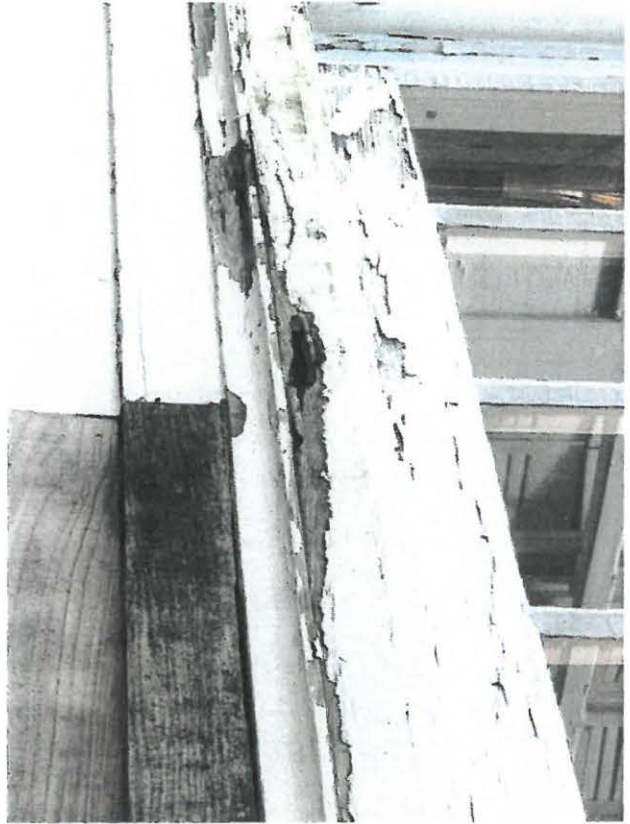


Figure 2.2

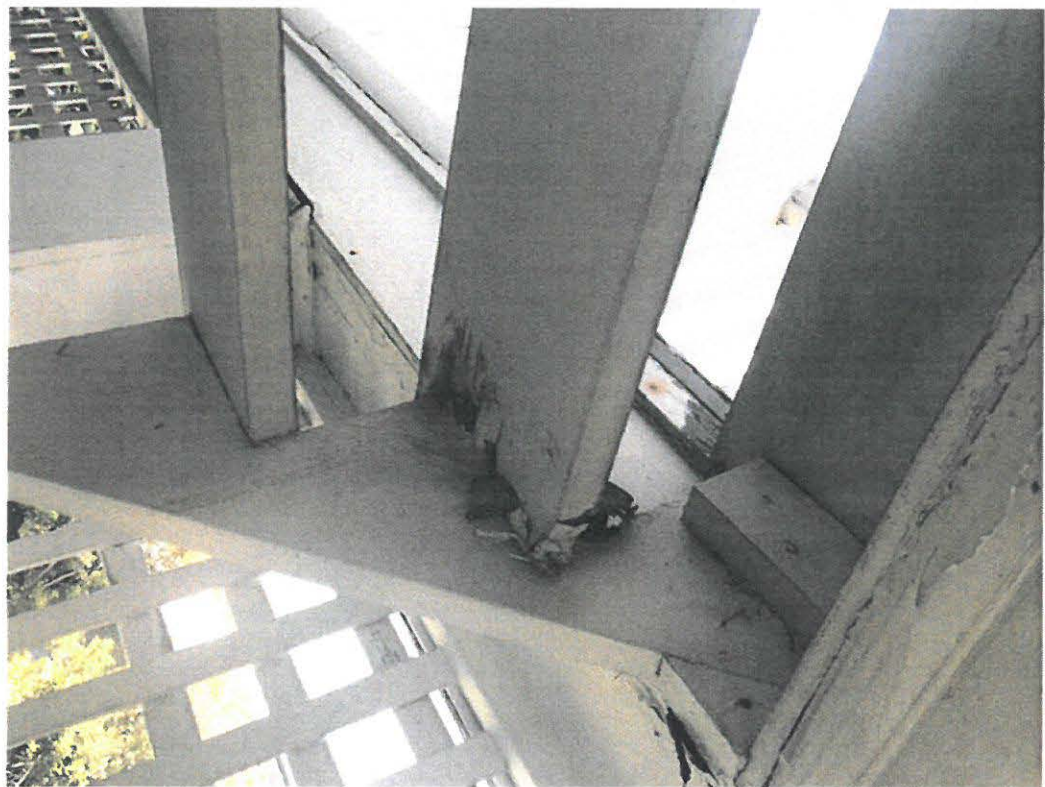


figure 3.0

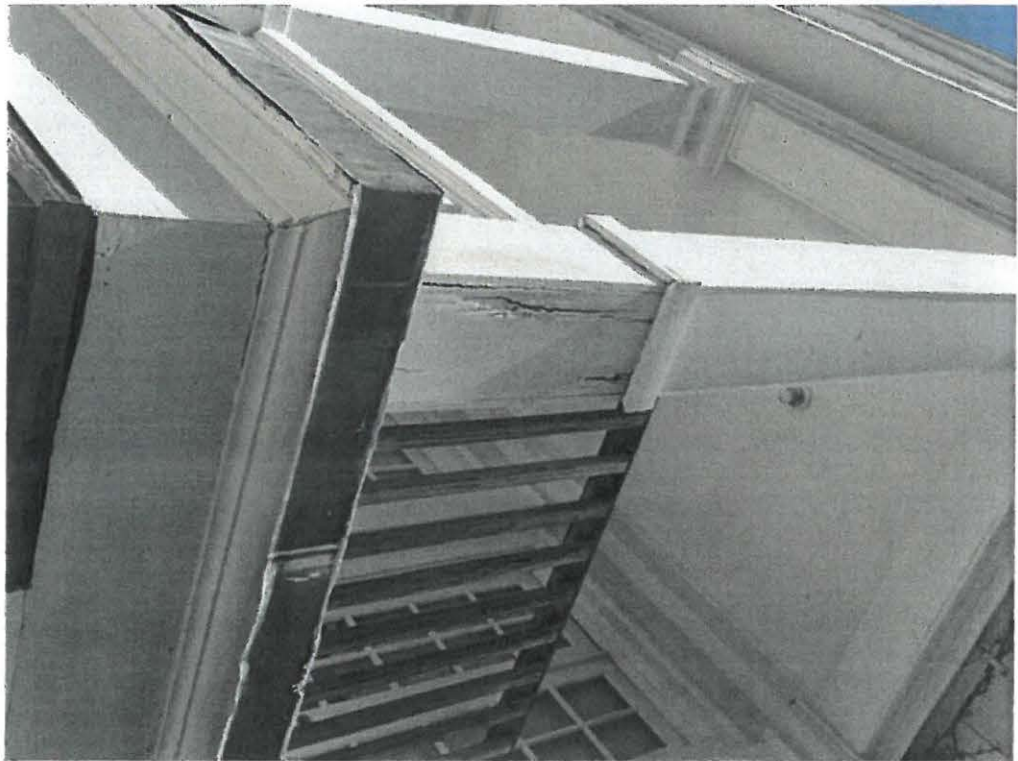


figure 3.1



figure 3.2

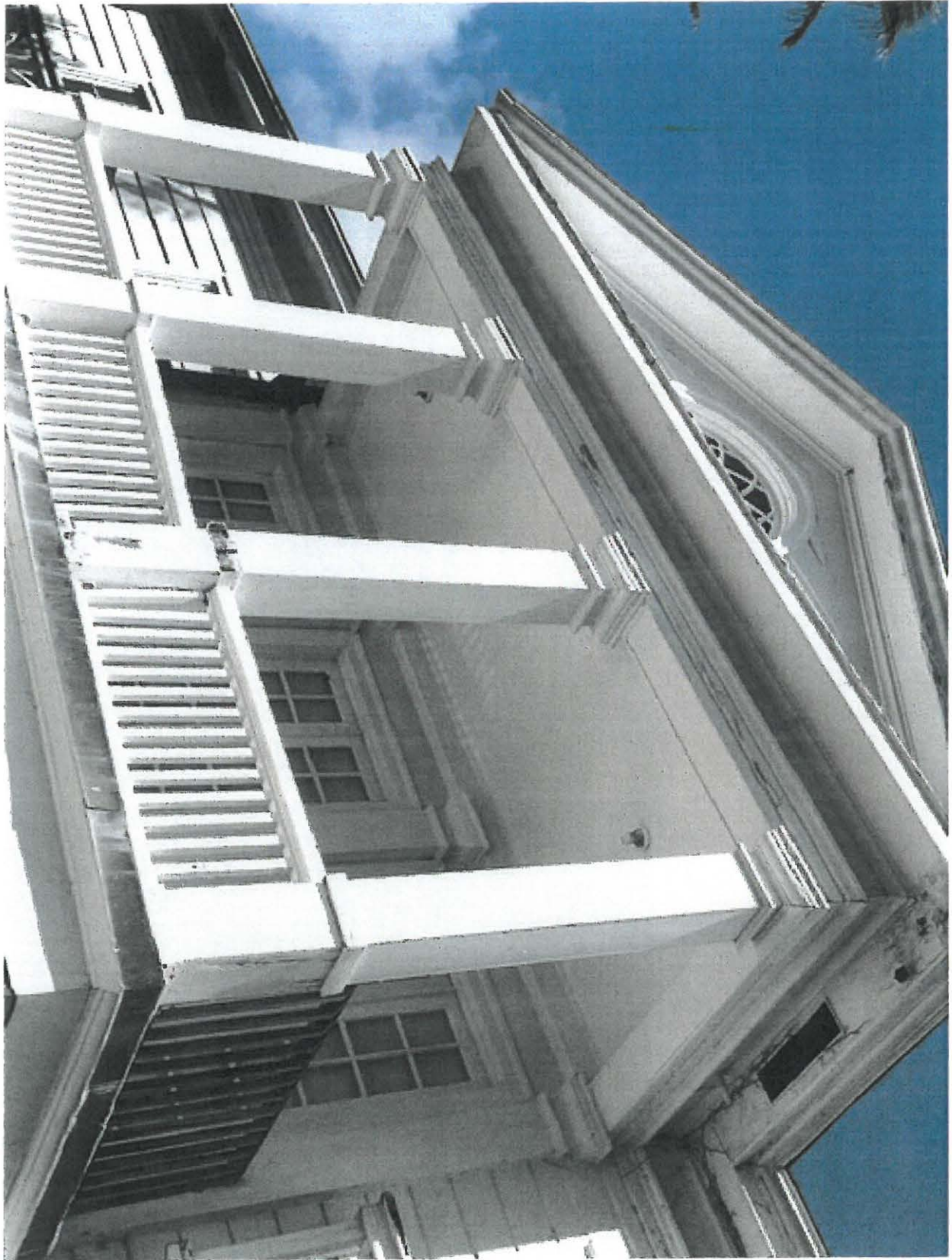


figure 3.3



Figure 3.4



fig 3.5
Current misc.



Figure 3.6
Current mist



Figure S.7
Current misc.

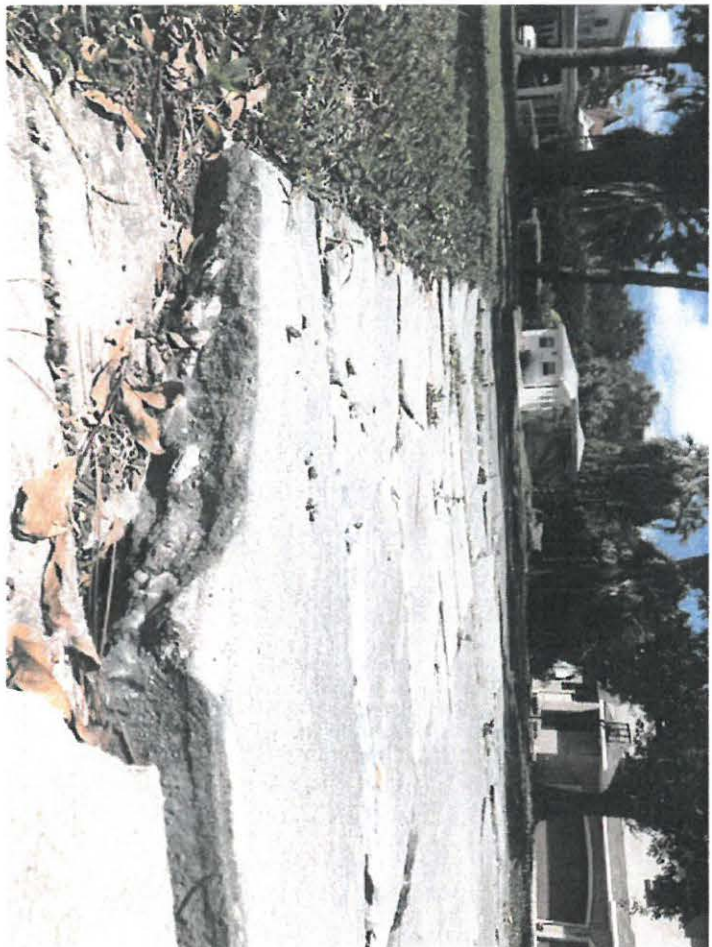
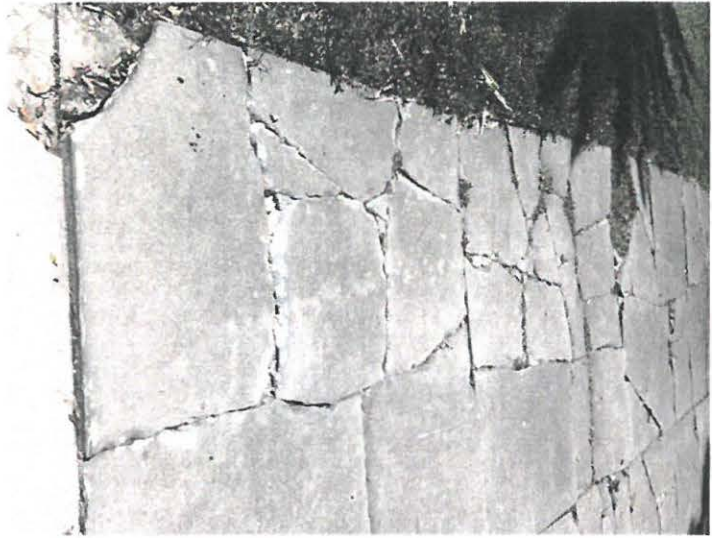


Figure 3.7
Driveway

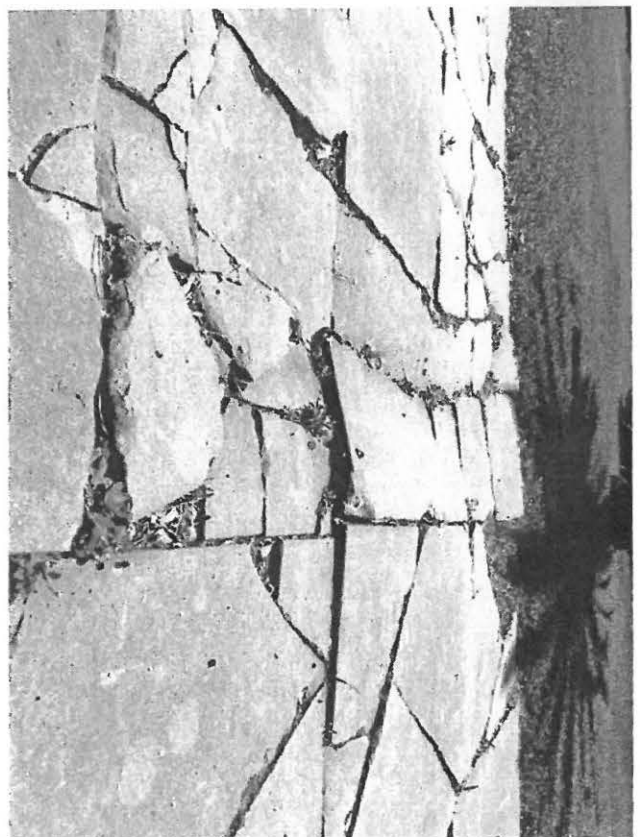
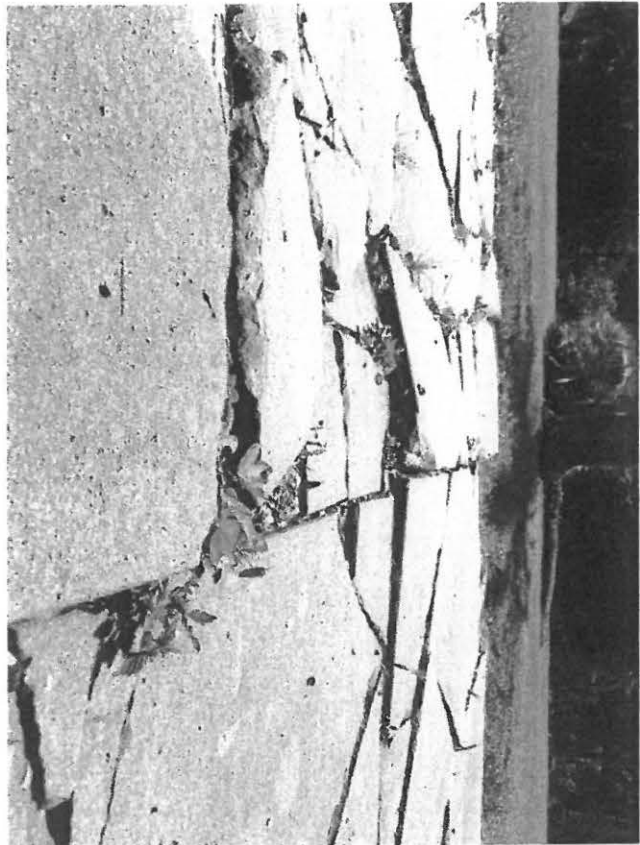


figure 2.8
Driveway



Figure 3.9
Current



Figure 3.10
Current



figure 3.11
Current



Figure 3.12
Current

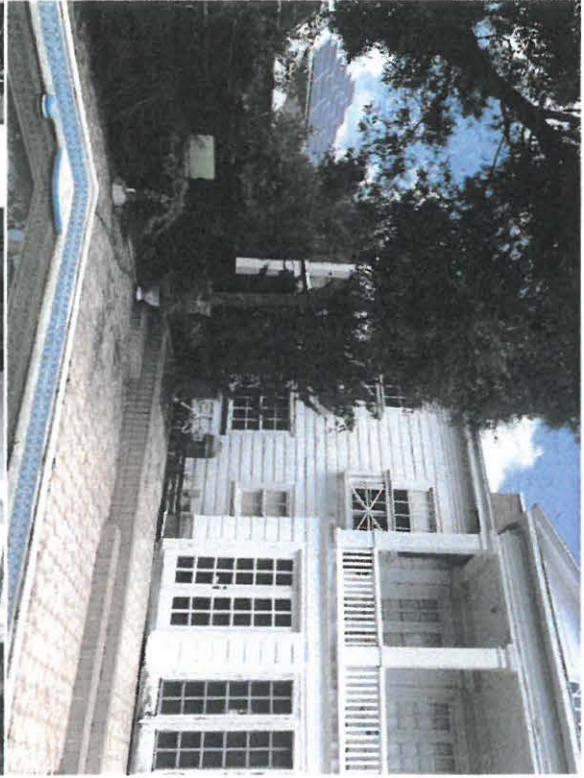


Figure 3.13
Current



figure 3.14
Current

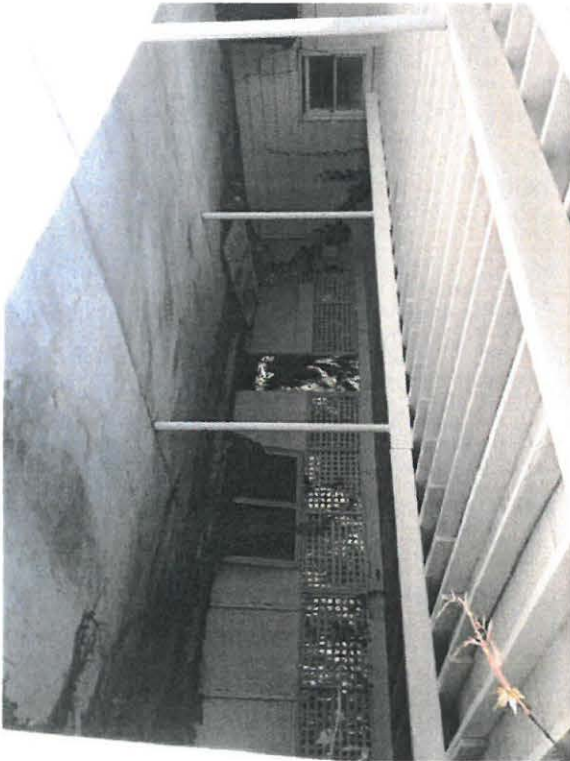
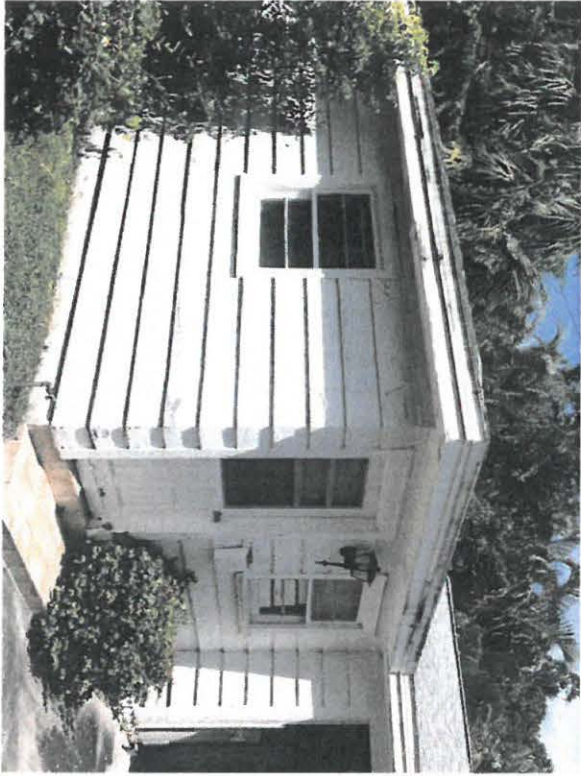


Figure 3.25
Current

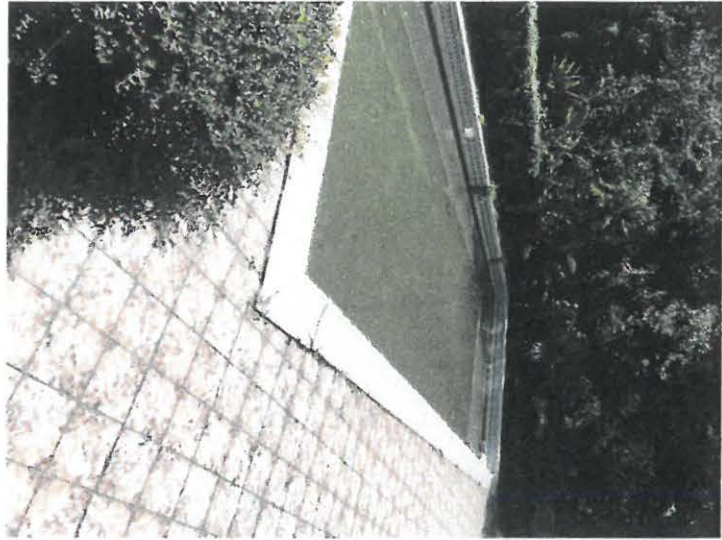


Figure 2.16
Current



Circa
1940's

Figure
3.17



Figure 3.18



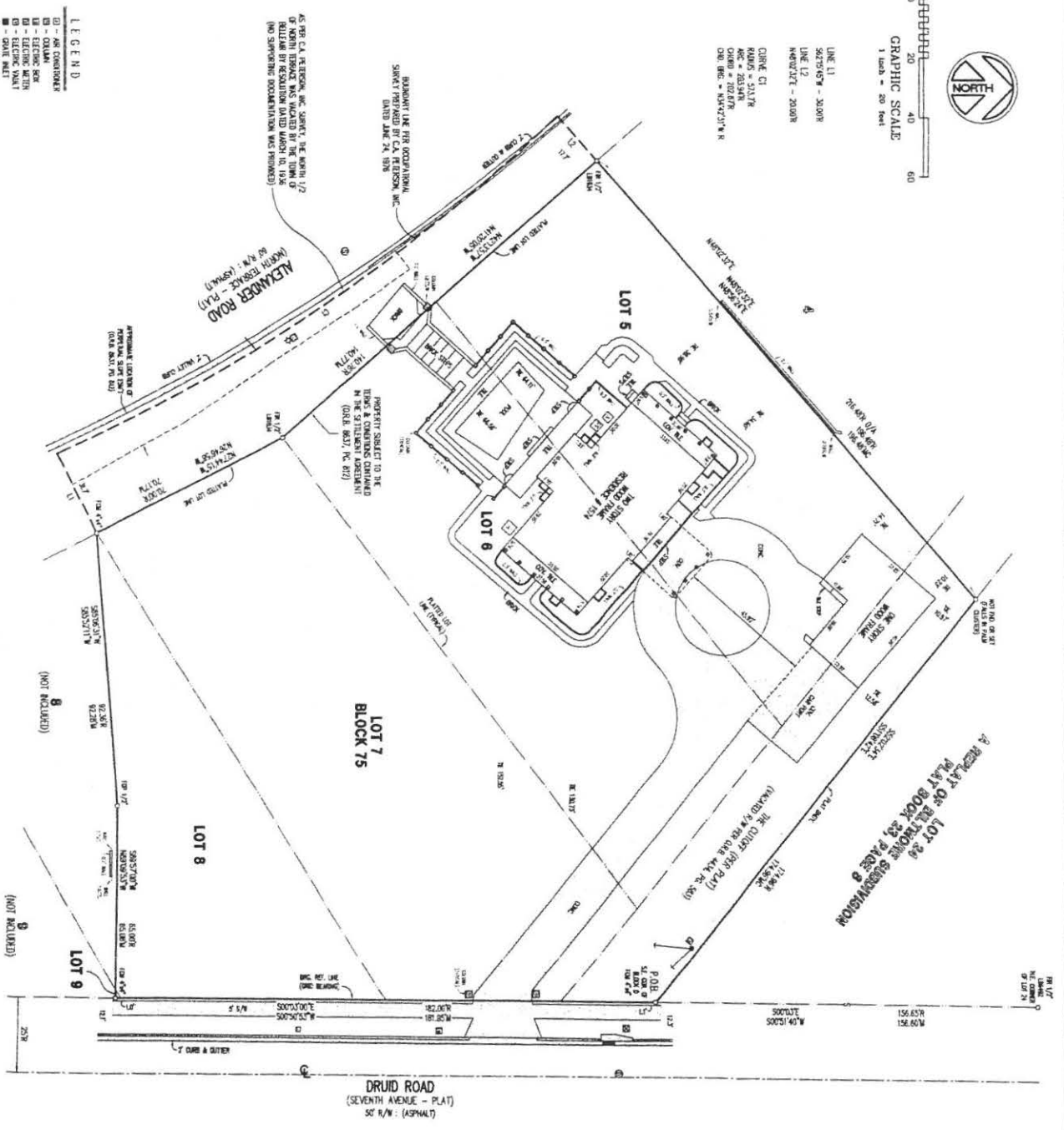


GRAPHIC SCALE
1 inch = 20 feet

LINE 11
S67°51'57" - 32.00'
LINE 12
N60°02'07" - 20.00'
CURVE C1
RADIUS = 501.78
CHORD = 202.878
CHORD BEC = 85°52'27" R

LEGEND

- 1 - ON CONCRETE
- 2 - ON GRAVEL
- 3 - ELECTRIC SOLE
- 4 - ELECTRIC WITH
- 5 - ELECTRIC VENT
- 6 - LOFT FILL
- 7 - POOL CASPANT
- 8 - POOL FILL
- 9 - POOL FILL
- 10 - POOL FILL
- 11 - POOL FILL
- 12 - POOL FILL
- 13 - POOL FILL
- 14 - POOL FILL
- 15 - POOL FILL
- 16 - POOL FILL
- 17 - POOL FILL
- 18 - POOL FILL
- 19 - POOL FILL
- 20 - POOL FILL
- 21 - POOL FILL
- 22 - POOL FILL
- 23 - POOL FILL
- 24 - POOL FILL
- 25 - POOL FILL
- 26 - POOL FILL
- 27 - POOL FILL
- 28 - POOL FILL
- 29 - POOL FILL
- 30 - POOL FILL
- 31 - POOL FILL
- 32 - POOL FILL
- 33 - POOL FILL
- 34 - POOL FILL
- 35 - POOL FILL
- 36 - POOL FILL
- 37 - POOL FILL
- 38 - POOL FILL
- 39 - POOL FILL
- 40 - POOL FILL
- 41 - POOL FILL
- 42 - POOL FILL
- 43 - POOL FILL
- 44 - POOL FILL
- 45 - POOL FILL
- 46 - POOL FILL
- 47 - POOL FILL
- 48 - POOL FILL
- 49 - POOL FILL
- 50 - POOL FILL
- 51 - POOL FILL
- 52 - POOL FILL
- 53 - POOL FILL
- 54 - POOL FILL
- 55 - POOL FILL
- 56 - POOL FILL
- 57 - POOL FILL
- 58 - POOL FILL
- 59 - POOL FILL
- 60 - POOL FILL
- 61 - POOL FILL
- 62 - POOL FILL
- 63 - POOL FILL
- 64 - POOL FILL
- 65 - POOL FILL
- 66 - POOL FILL
- 67 - POOL FILL
- 68 - POOL FILL
- 69 - POOL FILL
- 70 - POOL FILL
- 71 - POOL FILL
- 72 - POOL FILL
- 73 - POOL FILL
- 74 - POOL FILL
- 75 - POOL FILL
- 76 - POOL FILL
- 77 - POOL FILL
- 78 - POOL FILL
- 79 - POOL FILL
- 80 - POOL FILL
- 81 - POOL FILL
- 82 - POOL FILL
- 83 - POOL FILL
- 84 - POOL FILL
- 85 - POOL FILL
- 86 - POOL FILL
- 87 - POOL FILL
- 88 - POOL FILL
- 89 - POOL FILL
- 90 - POOL FILL
- 91 - POOL FILL
- 92 - POOL FILL
- 93 - POOL FILL
- 94 - POOL FILL
- 95 - POOL FILL
- 96 - POOL FILL
- 97 - POOL FILL
- 98 - POOL FILL
- 99 - POOL FILL
- 100 - POOL FILL



NOTES CORRESPONDING TO SCHEDULE B, SECTION 1

SURVEY ABBREVIATIONS

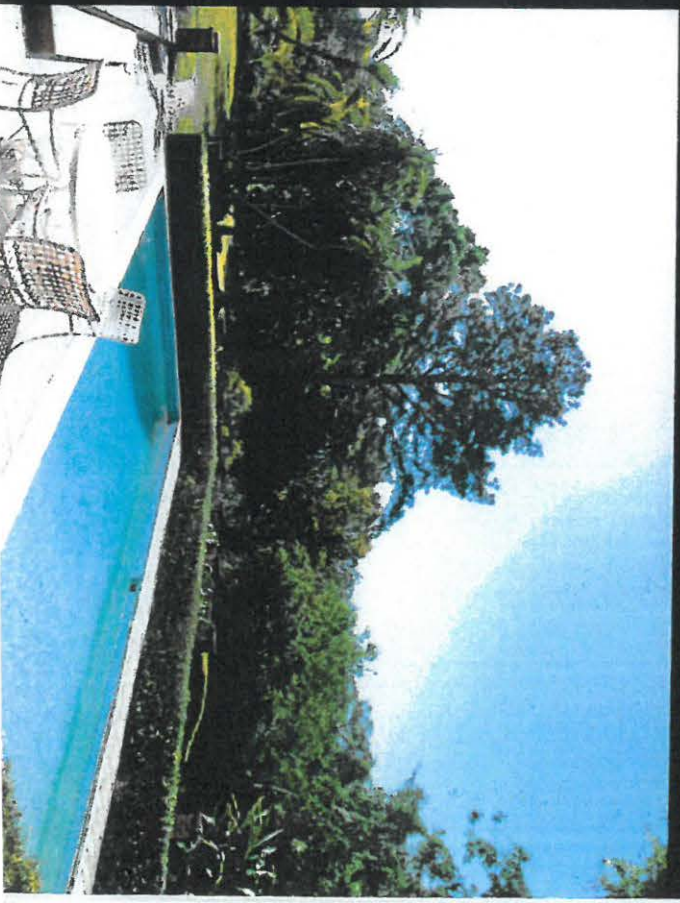
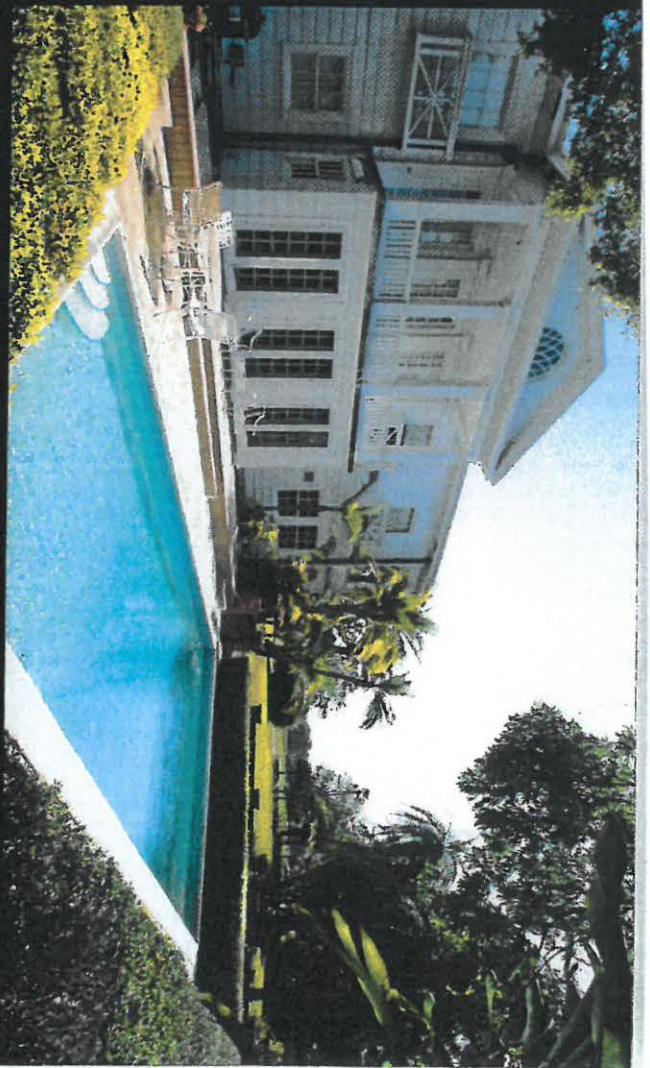
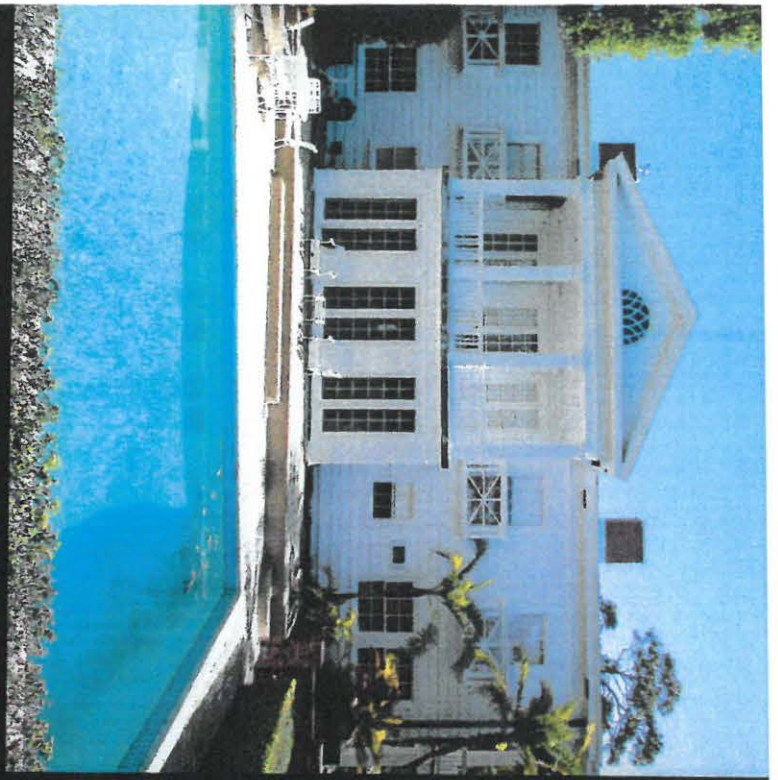


mLS
Listing
Book

1574 Druid Road ~ Belleair









IMPACT RESISTANT VINYL WINDOWS & DOORS

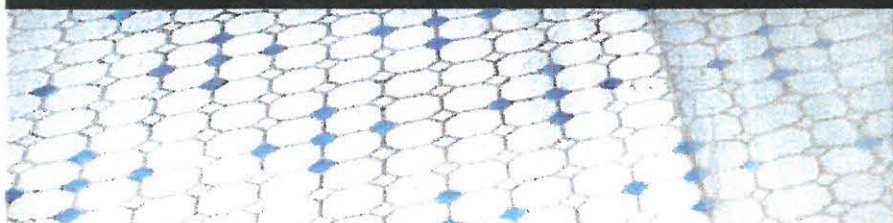


Custom[®] 
WINDOW SYSTEMS

1.800.327.3086 • www.CWS.cc

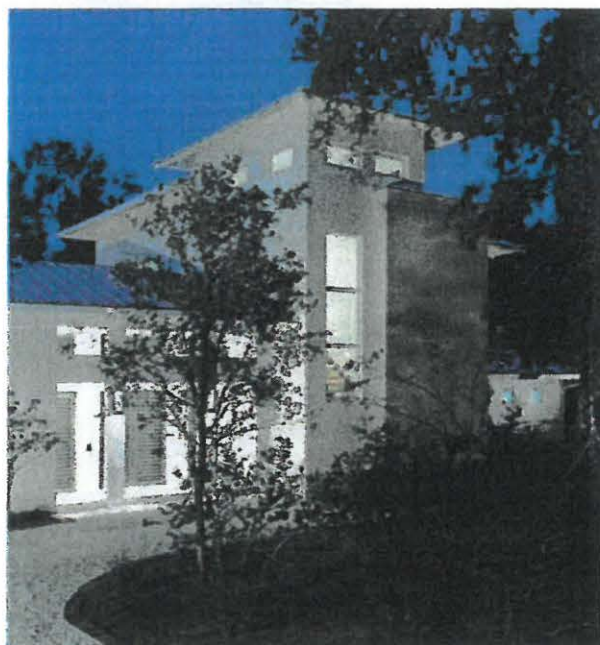


**SAFETY, SECURITY AND
ENERGY EFFICIENCY...**



The WindPact Plus® Series from Custom Window Systems not only fits better and looks better, it also performs better.

Custom Window Systems, Inc. has been manufacturing high quality windows and doors in Ocala, Florida since 1986. Our WindPact Plus® product line is specifically designed for the hurricane impact zones in Florida and other coastal markets. Our 225,000 square feet of modern manufacturing ensures that we achieve superior levels of impact resistance, safety and security.



Throughout that time we have been proudly innovating and introducing products that meet or exceed the most stringent coastal requirements, including full High Velocity Hurricane Zone (HVHZ) ratings. The WindPact Plus Series is an example of our innovation. We build in all of the newest advances in engineering and technology while never compromising on quality. This ensures that the WindPact Plus® Series from Custom Window Systems not only fits better and looks better, it also performs better.



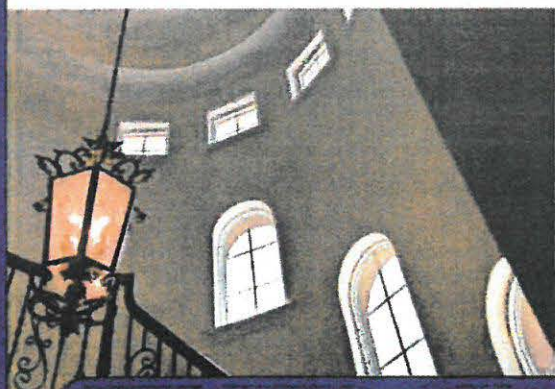
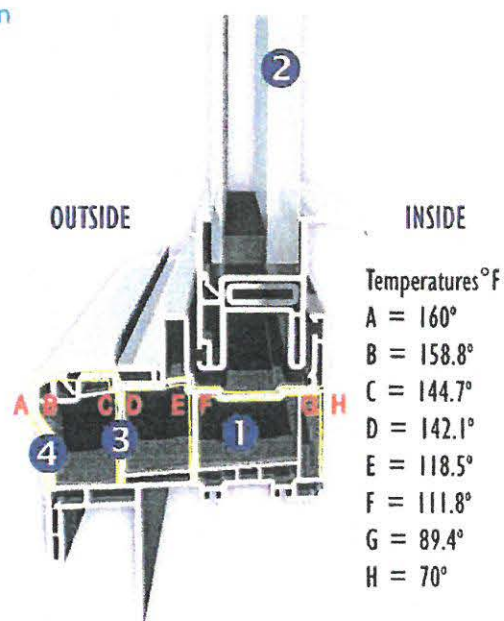
CHOOSE VINYL WINDOWS

ADVANCED DESIGN AND ENGINEERING

Custom uses a proprietary compound that incorporates only high-grade resins and additives to achieve optimal weathering, durability, color retention and impact resistance.

The resulting vinyl extrusion provides superior performance in Florida's heat, humidity and severe weather.

- 1) Multiple hollow chambers for strength and insulation (3 times the amount of other vinyl windows)
- 2) Dual-pane laminated insulated glass with argon gas fill (standard)
- 3) Thick vinyl walls for added structural integrity (Our frames do not require aluminum reinforcement which reduces energy efficiency.)
- 4) Covered weep holes in the sill control water penetration and drainage



HEAT BUILD UP

The diagram above demonstrates how the nonconductive nature of vinyl keeps the window profile from distorting even when exposed to 160 degrees Fahrenheit. The interior surface temperature is 70 degrees Fahrenheit. Vinyl is part of a window "system", including glass, that is structurally glazed into the frame. This helps to explain why vinyl windows outperform other frame materials even when exposed to high heat environments.

MULTI-CAVITY CONSTRUCTION

Chambers of insulating air help reduce the transfer of heat into your home while multiple walls of webbing provide superior strength and rigidity. The WindPact Plus series features 18 insulating chambers—the competition has only a few.

John Silvers Construction, Inc. — John Silvers, President and CEO

As professional remodelers on the barrier islands, it is very important to us that we find the quality of products necessary to deal with extreme weather. Custom Window Systems has been our "go to" vendor for windows and sliding glass doors. The quality is exceptional, the engineering is spot on and, when necessary, the aftermarket service is beyond compare. It is with confidence that we install products made by Custom. We are assured that when the next storm hits, we will be able to sleep at night knowing that Custom Window Systems is the best in the business in forestalling catastrophes for our customers.



CHOOSE VINYL

✓ Increased Energy Efficiency

- All Custom vinyl windows are AAMA and NFRC certified, and are compliant with ENERGY STAR[®]
- The features listed helps satisfy LEED[™] credits.

✓ Low Maintenance

- Vinyl windows are extremely durable, resisting rotting, chipping, peeling and corrosion, and are not susceptible to insect or fungus attack.
- Vinyl's ability to be cleaned easily and thoroughly with mild soap and water makes it a popular material for use in hospitals and other health care environments.

✓ Noise Reduction

- High Sound Transmission Coefficient ratings
- Laminated insulated glass reduces exterior sounds
- Vinyl frames absorb sound

✓ Safety And Security

- Safety from flying debris
- Forced entry resistance—keep intruders out
- Laminated glass is on the inside of the house protecting your home and family from sharp pieces of glass

✓ Hurricane Protection

- Available with high structural ratings that outperform other impact windows.
- Custom Window Systems' doors and windows have been tested to the stringent requirements of the Florida Building Code and have obtained Florida Product Approvals allowing our products to be used throughout the state, including the High Velocity Hurricane Zone (HVHZ).

How Hurricane Impact-Resistant Windows Protects the Building

If the building envelope is breached through a broken window, wind may enter the building causing an increase in pressure that could lift the roof and push the walls outward.



WindPact Plus Hurricane Impact-Resistant windows helps to preserve the building envelope, keeping wind and other elements outside.



GLASS TECHNOLOGY

SAVE MONEY BY CHOOSING THE RIGHT GLASS TECHNOLOGY.

In addition to enhancing the beauty of your home, windows also possess important functional features. Low-E glass reflects heat back to its source, keeping unwanted solar heat gain from penetrating your home. [Compare our glass configuration to other systems.](#) Use the QR code to view a video of our configuration. ▶

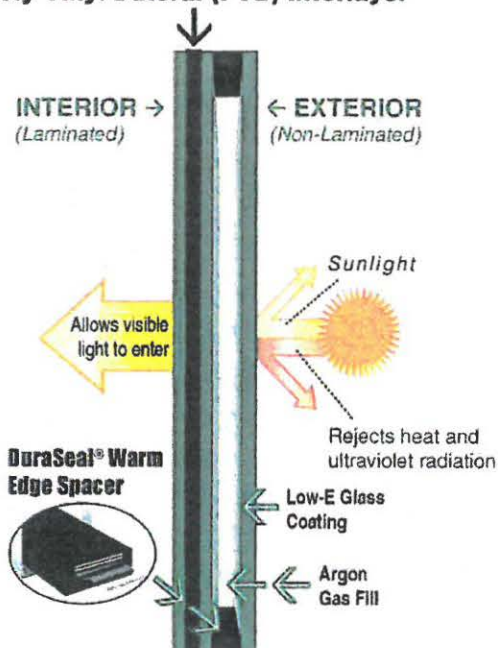


Custom applies the microscopic metallic layer on the outer pane of glass (which is optimal for windows in a hot climate), which minimizes heat gain and reflects heat back outside.



LAMINATED INSULATED GLASS

Poly Vinyl Butural (PVB) Interlayer

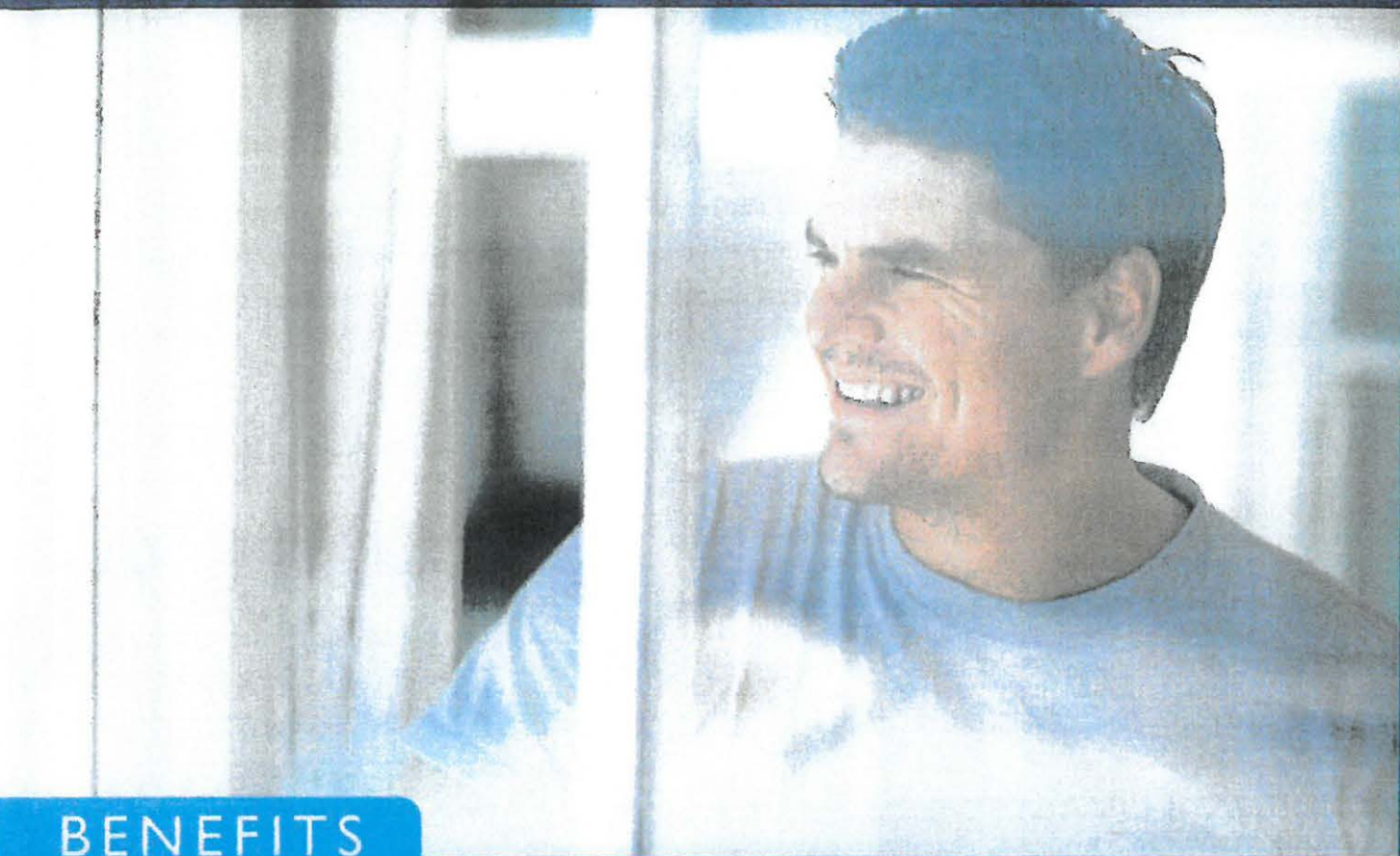


WHAT IS ARGON GAS?

Argon is a colorless, odorless, and nontoxic gas. It is inert and heavier than air. When filled in the insulating glass space, it forms a clear insulating barrier that assists in slowing the transfer of heat or cold. Custom puts argon gas in every WindPact Plus Series laminated insulated glass unit, providing an extra insulating layer in the glass system.

LOW EMISSIVITY GLASS—EXPLAINED

The patented, state of the art sputtered coatings consist of either two or three layers of silver. These special coatings distinguish between desirable visible light against unwelcome ultra-violet rays resulting in the ultimate in solar heat and fading protection. The high transmission coatings are virtually clear, blocking the heat and reducing solar gain, while optimizing light transmission. In fact, the Low-E 270 and Low-E 366 coatings actually outperform the tinted glass often used in warm climates. In addition, because the Low-E glass transmits more natural light and reduces solar gain, you may be able to reduce both lighting and air conditioning electrical loads.



BENEFITS

✓ Solar Control

- Decrease heat gain in your home from direct sunlight
- Control overall temperature levels year round
- Lessen energy costs from air conditioning

✓ Noise Reduction

- Reduce intrusive sounds from the outside, including traffic, aircraft and neighborhood noise

✓ UV Protection

- Laminated insulated glass blocks 99.7% of ultraviolet rays
- Protects hardwood floors and furniture from fading

✓ Insulation

- Non-conductive vinyl frame members and laminated insulated glass reduce conduction and resultant heat loss to a value far below other window frame materials.

WindPact Plus Series Glass Systems

WindPact Plus[®] impact resistant laminated insulated glass with Low-E coatings filter out **99.7%** of the damaging ultraviolet rays that cause damage to furniture, draperies and carpeting. Our complete laminated insulated impact resistant glass program provides the competitive edge.

Glass: 5/16" thick laminated glass with a .090" poly-vinyl butural (PVB) interlayer interior pane and a 1/8" exterior cap combine for a 7/8" overall laminated insulated glass unit.

Spacer: Custom features the Duraseal[®] spacer insulating glass edge seal system constructed using a unique composite laminating technology. This spacer system is a high performing, low conductivity warm-edge spacer that when combined with the WindPact Plus[®] energy-efficient vinyl frame creates the highest performing vinyl impact resistant window system available.

VINYL IMPACT WINDOWS

CHOOSE THE STRONGEST AND SAFEST VINYL IMPACT-RESISTANT SINGLE HUNG ON THE MARKET.

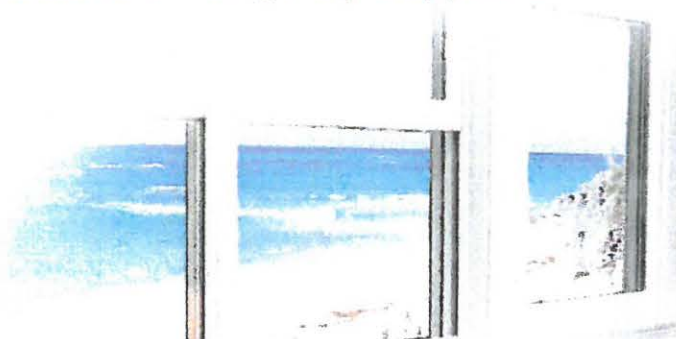
The WindPact Plus® single hung has been designed specifically for the coastal impact-resistant market not to tilt in, resulting in the strongest and safest vinyl impact-resistant single hung on the market. The sash recesses back into the frame, allowing for a much higher design pressure, instead of relying on small tilt latches to keep your sash intact when impacted. The average weight of a sash in an impact-resistant window is 35 lbs. By not tilting in, you are protected from having a very heavy piece of glass to support. ►



8100 Model



8200 Model



VINYL WINDOWS

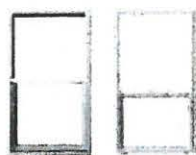
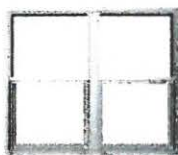
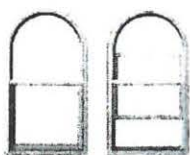
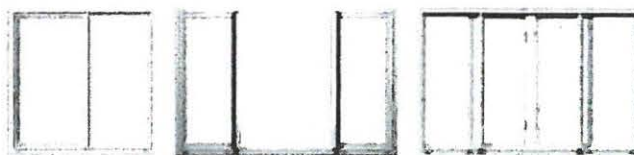
8100 SINGLE HUNG

- Oriel, Arch Top and Half Circle configurations available
- Continuous head and sill twin options
- Exterior beveled frame for architectural style (Single & Horizontal windows)
- Our Single Hung sliding windows are designed to slide effortlessly up or down on heavy duty block-and-tackle sash balances
- Integral lift handles on top and bottom rails for ease of operation
- Design pressures up to +/- 100

8200 HORIZONTAL SLIDER

- Configuration options: OX, XO, XOX
- XOX window is available as 1/3 1/3 1/3 or 1/4 1/2 1/4
- For large areas, our three lite slider opens at both ends for optimal visibility and ventilation
- Integral lift handles on both side rails for ease of operation
- Design pressures up to +60/-75

CONFIGURATIONS:

8100 Single Hung
& Single Hung Oriel8100 Twin
Single Hung8100 Circle & Arch
Top Single Hung

8200 Horizontal Slider & 8200 Slide-Picture-Slide

8100 Model

BENEFITS & OPTIONS

- ✓ Meets or exceeds all Energy Star® standards
- ✓ High design pressures
- ✓ Available with Low-E glass (270, 240, 366)
 - 7/8" laminated glass with argon gas for superior ultraviolet and thermal protection
 - Double-strength glass standard
- ✓ High performance Duraseal® spacer system
 - Excellent thermal performance and energy efficiency
 - Keeps windows clearer longer

- ✓ Added Security ▶
 - Dual-action, self-locking sash locks
- ✓ Durability and Resistance from the elements
 - Exterior-glazed, fusion welded frame and sash
 - Weather-stripped interlock with dual seal sash to frame, creates a positive seal keeping out harsh elements
- ✓ Rugged BetterVue® Screen Standard
 - 10% better insect protection—20% better airflow—10% clearer view
 - BetterVue® screen will not rust, corrode or stain.



FRAME COLORS



Our bronze exterior color has a special UV cured technology that is 7 times harder than paint—making it the most durable applied coating available.

ChromaCote

Available in all of our ChromaCote veneer colors.



GRID MATERIAL

◀ Classic SDL (Simulated Divided Lite)



Contour Exterior ▶

Contour exterior with contour grid between the glass. Available in all frame colors.

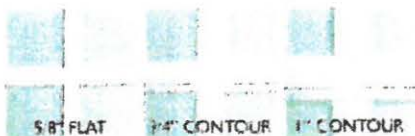


GLASS COLORS



Also available: Clear, Bronze, Light Gray, Sun, Azurelite Blue

BETWEEN THE GLASS GRIDS



GLASS FINISHES



VINYL IMPACT WINDOWS

OFFERING A PICTURE PERFECT WINDOW WITH STYLE, SOPHISTICATION AND DURABILITY.

Our WindPact Plus[™] Casement and Awning windows offer style, sophistication and durability. Mix them with our Picture window model for maximum viewing possibilities and add some architectural shapes for elegant curb appeal. **These windows will offer both beauty and style, free of viewing obstructions.** ▶



8400 Model Above—8300 Model Below



VINYL WINDOWS

8150/8300 PICTURE WINDOW

Combination units available

Also specializing in windows for historical districts

8150 flange profile has a 1/2" lower beveled architectural protrusion on the face of the flange than the 8300 frame

8150 frame has same outer frame extrusion as 8100 SH and 8200 HS

8300 resembles the 8400 Casement and 8450 Awning

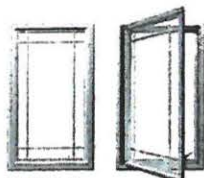
8400 CASEMENT— 8450 AWNING

Combination units available

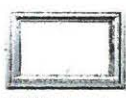
Exterior beveled frame for architectural style

Extruded Florida flange, nail fin or box frame

CONFIGURATIONS:



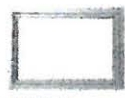
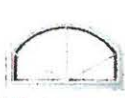
8400 Casement



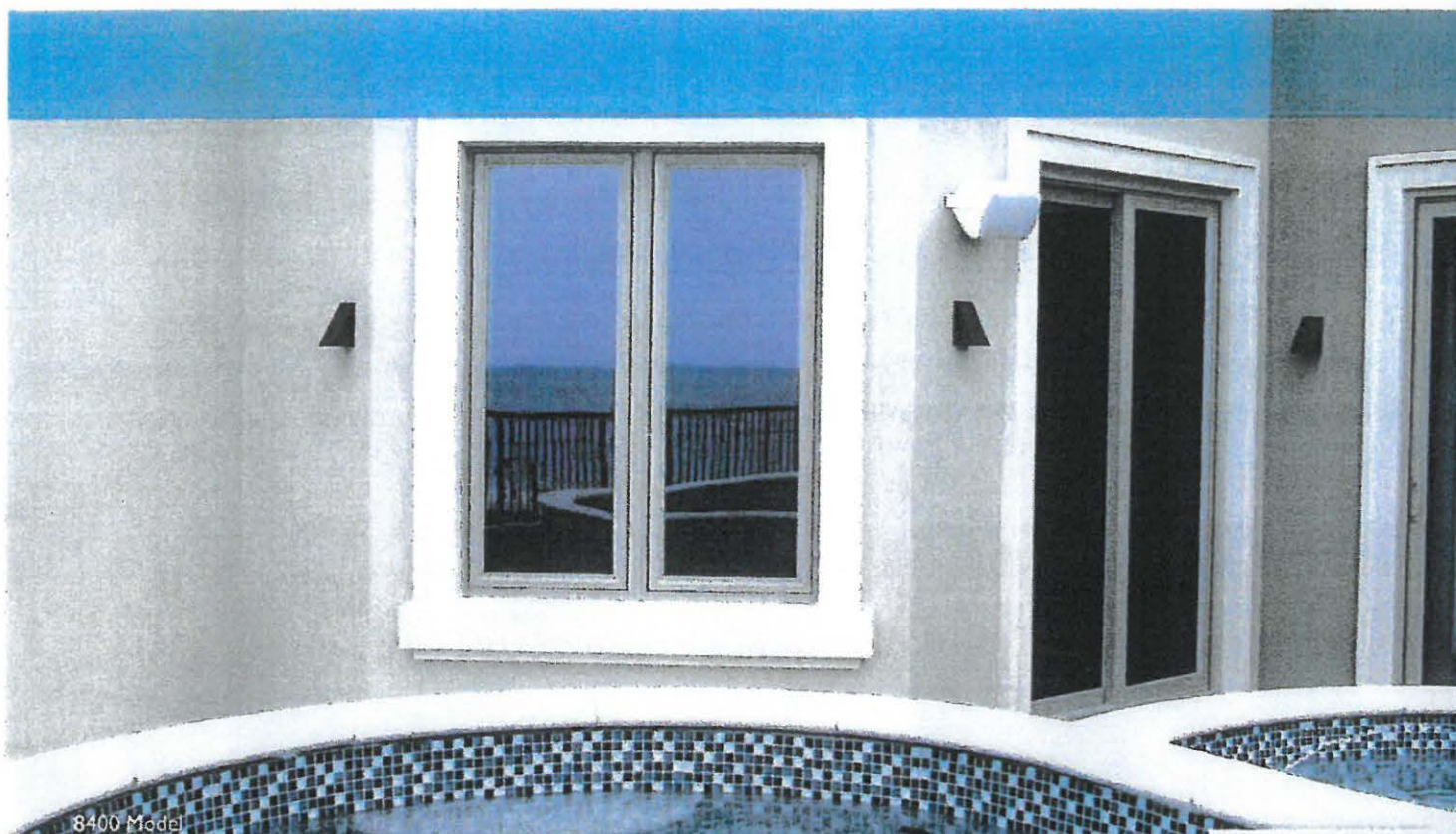
8450 Awning



8150 Picture Window



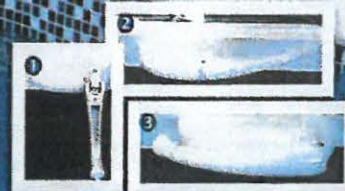
8300 Picture Window



8400 Model

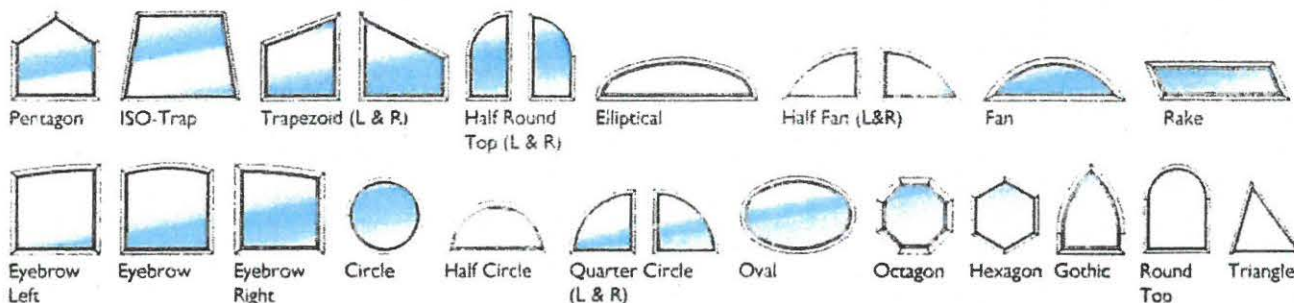
BENEFITS & OPTIONS

- ✓ **Meets or exceeds all Energy Star[®] standards**
- ✓ **High design pressures**
 - Design pressures up to +/- 75
- ✓ **Available with Low-E glass (270, 240, 366)**
 - 7/8" laminated glass (1" on Picture Windows) with argon gas for superior ultraviolet and thermal protection
 - Double-strength glass standard
- ✓ **High performance Duraseal[®] spacer system**
 - Excellent thermal performance and energy efficiency
 - Keeps windows clearer longer
- ✓ **Open with ease ▶**
 - Casement and Awning windows feature a low-profile operator
- ✓ **Durability and Resistance from the elements**
 - Exterior-glazed, fusion welded frame and sash
- ✓ **Rugged BetterVue[®] Screen Standard**
 - 10% better insect protection—20% better airflow
 - 10% clearer view
 - BetterVue[®] screen will not rust, corrode or stain.



OPTIONS ARE THE SAME AS THE SINGLE HUNG AND HORIZONTAL SLIDING WINDOWS—PLEASE VIEW ALL OPTIONS ON PAGE 9

PICTURE WINDOW SHAPES:



VINYL IMPACT DOORS

DESIGNED TO LAST A LIFETIME PROVIDING YOU WITH PROTECTION AND BEAUTY.

Our WindPact Plus® Vinyl Sliding Glass Doors are high-impact and high-performance, combining the perfect balance of superior craftsmanship and aesthetic appeal. Our WindPact Plus® Sliding Glass Doors are constructed to withstand the damaging effects of coastal weather. ▶



8940 Model



8940 Model

VINYL DOORS

8900 SLIDING GLASS DOOR

Constructed with weather resistant vinyl frame, panel and interlock
Configurations: XO, OX, OXO, OXXO, OOX, XOO, OOXO
Screen Track: Outside
Design pressures up to +/- 60

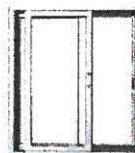
8940 SLIDING GLASS DOOR

Constructed with a heavy-duty aluminum interlock and weather resistant vinyl frame and panels
Any configuration up to 8 panels
Custom sizes available
Available with an infinite number of tracks
Screen Track: Inside (optional) — modular outer frame. Minimum 5 1/4" track depth without screen track. The unique inside screen track protects against damaging effects of coastal weather.
Design pressures up to +/- 70 at 192" x 96"
Design pressures up to +/- 120 at 96" x 96"

CONFIGURATIONS:



8900 OX
Sliding Glass Door



8940 OX
Sliding Glass Door





8900 Model

BENEFITS & OPTIONS

- ✓ Meets or exceeds all Energy Star[®] standards
- ✓ High design pressures
- ✓ Available with Low-E glass (270, 240, 366)
 - 1" laminated glass with argon gas for superior ultraviolet and thermal protection
- ✓ High performance Duraseal[®] spacer system
 - Excellent thermal performance and energy efficiency
 - Keeps windows clearer longer
- ✓ Maximum Natural Lighting
 - Constructed to feature benefits of effortless cleaning and maximum natural lighting

- ✓ Durability and Resistance from the elements
 - Exterior-glazed, fusion welded frame and sash
 - Weather-stripped interlock with dual seal sash to frame, creates a positive seal keeping out harsh elements
 - Covered weep holes in sill control water penetration and drainage
- ✓ Premium Roller - As Option ▶
 - Choose from our standard size stainless steel roller system or premium roller option with larger wheels for even smoother operation.



Stainless Steel Roller



SS Premium Roller

FRAME COLORS

ChromaCote[®]

Available in all of our ChromaCote veneer colors. Our bronze exterior color has a special UV cured technology that is 7 times harder than paint—making it the most durable applied coating available.



WHITE



BRONZE EXT.
WHITE INT. or
BRONZE EXT.
BRONZE INT.



ADOBE

HANDLES



Standard
(Exterior/Interior)



Satin Nickel
Olympus



Push
Mount



Sigma



Omega

GLASS COLORS



LoE 270
Low light, ultra clear vision



LoE 240
Low glare, high performance



LoE 366
The best, least expensive



LoE 366 Near
Maximum clarity, clear vision

Also available: Clear, Bronze, Light Gray, Sun, Azurelite Blue

SEE CHROMACOTE COLORS,
GRID MATERIAL AND GLASS FINISHES
ON PAGE 9

ALUMINUM IMPACT DOORS

DESIGNED TO INSPIRE AND IMPRESS.

Our WindPact Plus® Aluminum Sliding Glass Doors are crafted using the highest-end materials, resisting deterioration from harsh weather conditions and normal wear-and-tear. They are not only built to meet or exceed building code requirements, but are also presented in classic or contemporary styles. ►



8920 Model



ALUMINUM DOORS

8920 SLIDING GLASS DOOR

Constructed with aluminum frame, vinyl panels and aluminum interlock
Configurations: Bypass, Pocket, Corner (90/135° Angle)—
Any configuration up to 8 panels
Design pressures range from +/- 67.5 to +/- 120

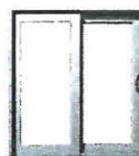
8950/8960 SLIDING GLASS DOOR

Constructed with aluminum frame, panels and interlock—
8950: 3" aluminum profile
8960: 5" aluminum profile
Configurations: Bypass, Pocket, or Double Pocket
Design pressures range from +/- 67.5 to +/- 120

CONFIGURATIONS:



8920 OX
Sliding Glass Door



8960 OX
Sliding Glass Door



8950/8960 Model

8920 Model

BENEFITS & OPTIONS

- ✓ Meets or exceeds all Energy Star[®] standards
- ✓ High design pressures
- ✓ Available with Low-E glass (270, 240, 366)
 - 1" laminated glass with argon gas for superior ultraviolet and thermal protection
- ✓ High performance Duraseal[®] spacer system
 - Excellent thermal performance and energy efficiency
 - Keeps windows clearer longer
- ✓ Classic or Contemporary
 - Choose your thickness in frames for a classic or contemporary look
- ✓ Durability and Resistance from the elements
 - Weather-stripped interlock with dual seal sash to frame, creates a positive seal keeping out harsh elements
- ✓ Premium Roller - As Option ▶
 - Choose from our standard size stainless steel roller system or premium roller option with larger wheels for even smoother operation. (8960 standard option, premium nylon roller)



Standard Steel Roller



P.S. Premium Roller

HANDLES— 8950, 8960 MODELS ONLY ▶

Standard
(Exterior/Interior)



HANDLES—8920 MODEL ONLY



Standard
(Exterior/Interior)



Satin Nickel
Olympus



Flush
Mount



Sigma



Omega

FRAME COLORS



WHITE



BRONZE



ADOBE

SEE GRID MATERIAL, GLASS COLORS,
AND GLASS FINISHES ON PAGE 9

8920 is only available in white and adobe.
Verify color availability with Inside Sales.



Your Custom Window System dealers are window and door professionals and are available to help you choose the best WindPact Plus products.

To find the dealer nearest you, call 1.800.327.3086 or visit our website www.CWS.cc

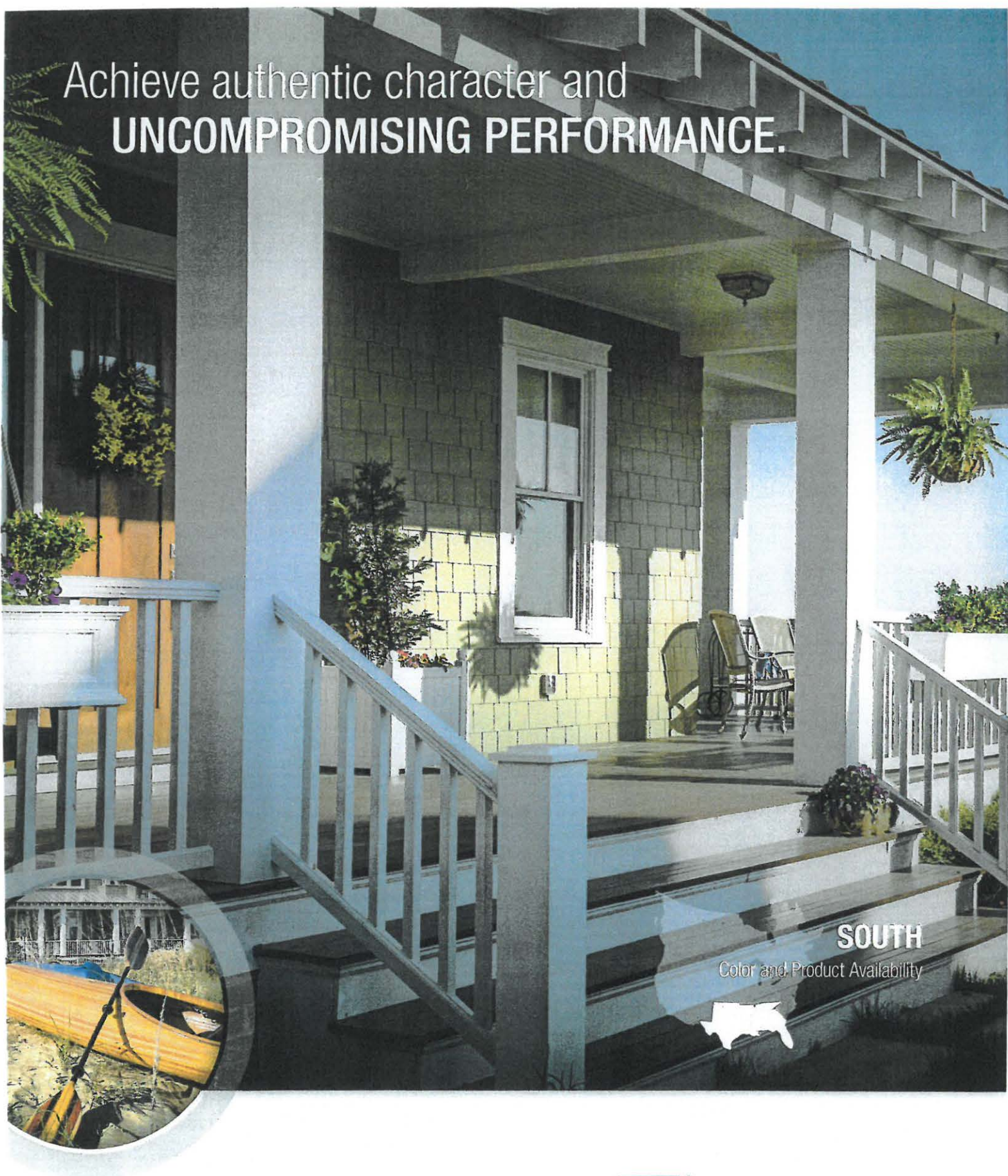


1900 SW 44TH AVENUE
OCALA, FL 34474
1.800.327.3086 • www.CWS.cc



All trademarks where denoted are marks of their respective owners. Registered Custom Window Systems, Inc. All rights reserved.

Achieve authentic character and
UNCOMPROMISING PERFORMANCE.



SOUTH

Color and Product Availability



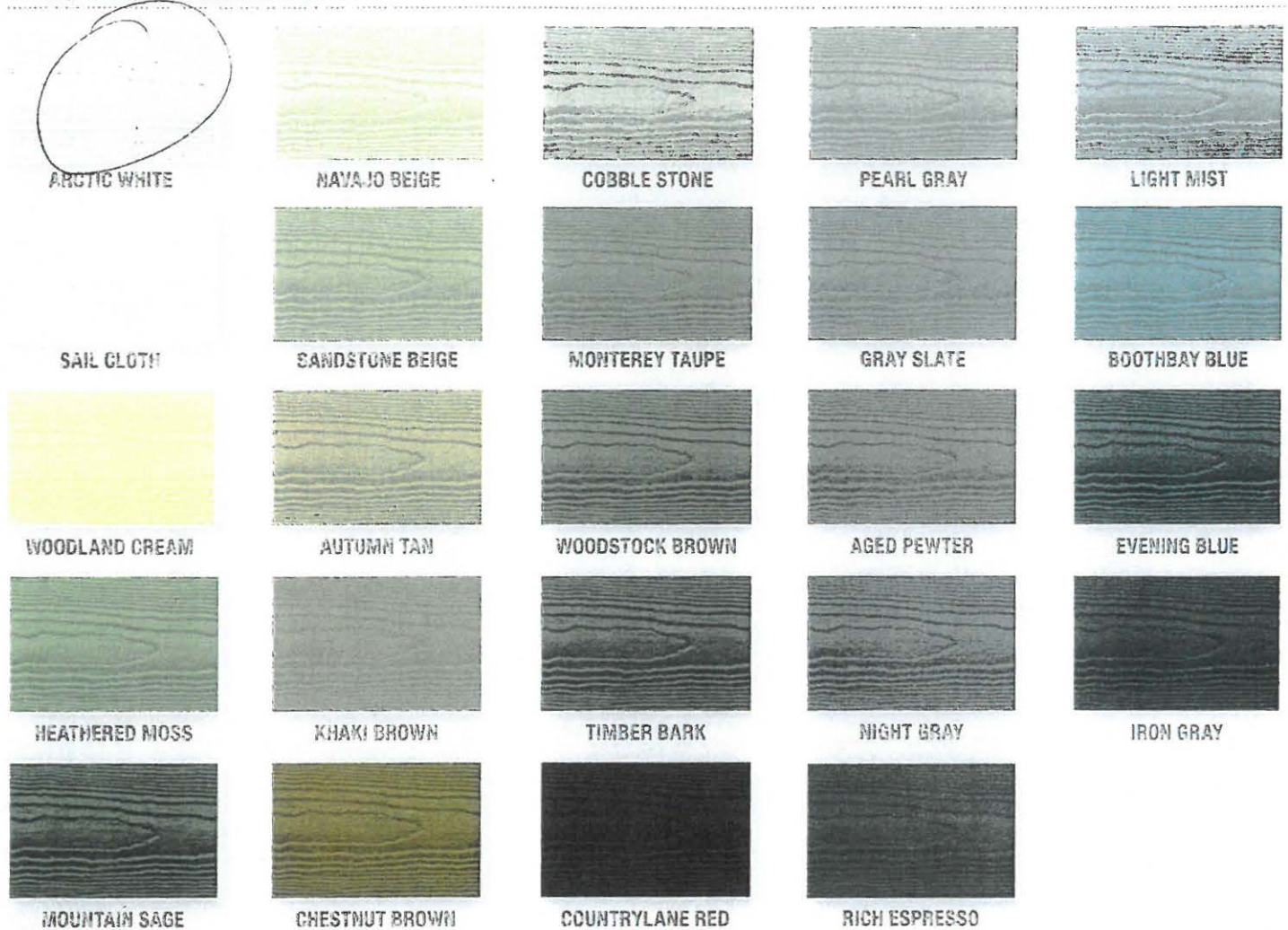
JamesHardie

Siding | Trim

ColorPlus® Technology

Color Selection

PLANK, PANEL, BATTEN AND SHINGLE COLORS



PLANK COASTAL COLORS*



*Coastal colors are available exclusively in HardiePlank® siding. Sail Cloth and Sargent Greenery® with 3.25 in. and 5.25 in. width only.

TRIM AND SOFFIT COLORS



HardiePlank®

Thickness 5/16 in.
Length 12 ft. planks

SELECT CEDARMILL®

Woodstock Brown

Width	5.25 in.	6.25 in.	7.25 in.	8.25 in.	9.25 in.	12 in.
Exposure	4 in.	5 in.	6 in.	7 in.	8 in.	10.75 in.
ColorPlus	✓	✓	✓	✓	✓	✓
Primed	✓	✓	✓	✓	✓	✓



SMOOTH

Countrylane Red

Width	5.25 in.	6.25 in.	7.25 in.	8.25 in.	9.25 in.	12 in.
Exposure	4 in.	5 in.	6 in.	7 in.	8 in.	10.75 in.
ColorPlus	✓	✓	✓	✓	✓	✓
Primed	✓	✓	✓	✓	✓	✓



BEADED CEDARMILL®

Boothbay Blue

Width	8.25 in.
Exposure	7 in.
ColorPlus	✓
Primed	✓



BEADED SMOOTH

Heathered Moss

Width	8.25 in.
Exposure	7 in.
ColorPlus	✓
Primed	✓



CUSTOM COLONIAL™ ROUGHSAWN

Heathered Moss

Width	8 in.
Exposure	6.75 in.
ColorPlus	✓
Primed	✓



CUSTOM COLONIAL™ SMOOTH

Evening Blue

Width	8 in.
Exposure	6.75 in.
ColorPlus	✓
Primed	✓



HardiePanel®

Thickness 5/16 in.

SELECT CEDARMILL®

Navajo Beige

Size	4 ft. x 8 ft.	4 ft. x 9 ft.	4 ft. x 10 ft.
ColorPlus	✓		✓
Primed	✓	✓	✓



SMOOTH

Evening Blue

Size	4 ft. x 8 ft.	4 ft. x 9 ft.	4 ft. x 10 ft.
ColorPlus	✓		✓
Primed	✓	✓	✓



STUCCO

Navajo Beige

Size	4 ft. x 8 ft.	4 ft. x 9 ft.	4 ft. x 10 ft.
ColorPlus	✓		✓
Primed	✓	✓	✓



SIERRA 8

Not available with ColorPlus Technology

Size	4 ft. x 8 ft.	4 ft. x 9 ft.	4 ft. x 10 ft.
ColorPlus			
Primed	✓	✓	✓



HardieShingle®

Thickness 1/4 in.

STAGGERED EDGE PANEL

Sandstone Beige

Size	48 in. x 15.25 in.
Exposure	6 in.
ColorPlus	✓
Primed	✓



STRAIGHT EDGE PANEL

Iron Gray

Size	48 in. x 15.25 in.
Exposure	7 in.
ColorPlus	✓
Primed	✓



HALF ROUNDS

Not available with ColorPlus Technology

Size	48 in. x 15.25 in.
Exposure	7 in.
ColorPlus	
Primed	✓



INDIVIDUAL SHINGLES

Sandstone Beige

Length	4.2 in.	5.5 in.	6.75 in.	7.25 in.	10 in.
Height	15.25 in. (Exp. 7 in.)				
ColorPlus	✓				
Primed	✓				



HardieSoffit®

Thickness 1/4 in.

VENTED CEDARMILL®

Sail Cloth

Length	12 ft.	12 ft.	8 ft.
Width	12 in.	16 in.	24 in.
ColorPlus	✓	✓	✓
Primed	✓	✓	✓

VENTED SMOOTH

Sail Cloth

Length	12 ft.	12 ft.	8 ft.
Width	12 in.	16 in.	24 in.
ColorPlus	✓	✓	✓
Primed	✓	✓	✓

NON-VENTED CEDARMILL®

Sail Cloth

Length	12 ft.	12 ft.	8 ft.	8 ft.
Width	12 in.	16 in.	24 in.	48 in.
ColorPlus	✓	✓	✓	
Primed	✓	✓	✓	✓

NON-VENTED SMOOTH

Sail Cloth

Length	12 ft.	12 ft.	8 ft.	8 ft.
Width	12 in.	16 in.	24 in.	48 in.
ColorPlus	✓	✓	✓	
Primed	✓	✓	✓	✓

BEADED PORCH PANEL™

Arctic White

Length	8 ft.
Width	48 in.
ColorPlus	✓
Primed	✓

HardieTrim®

Length 12 ft. boards

4/4 RUSTIC & SMOOTH

Arctic White

Thickness	.75 in.
Width	1.65 in. 3.5 in. 5.5 in. 7.25 in. 9.25 in. 11.25 in.
ColorPlus	✓ ✓ ✓ ✓ ✓ ✓
Primed	✓ ✓ ✓ ✓ ✓ ✓

5/4 RUSTIC & SMOOTH

Arctic White

Thickness	1 in.
Width	3.5 in. 5.5 in. 7.25 in. 9.25 in. 11.25 in.
ColorPlus	✓ ✓ ✓ ✓ ✓
Primed	✓ ✓ ✓ ✓ ✓

CROWN MOULDING

Arctic White

Thickness	.75 in.
Width	3.25 in. 5.25 in.
ColorPlus	✓ ✓
Primed	✓ ✓

BATTEN BOARD RUSTIC GRAIN®

Arctic White

Thickness	.75 in.
Width	2.5 in.
ColorPlus	✓
Primed	✓

BATTEN BOARD SMOOTH

Arctic White

Thickness	.75 in.
Width	2.5 in.
ColorPlus	✓
Primed	✓

Give homes a durable, rich, consistent color no field applied house paint can match.

Our advanced ColorPlus® Technology finishes deliver the ultimate in aesthetics and performance. Our products aren't simply painted at the factory. Multiple coats of color are baked onto the board, creating a vibrant, consistent finish for years of lasting character, adhesion and fade resistance.

Colors shown are as accurate as printing methods will permit. Please see actual product sample for true color.

It's time to build something timeless.



Installed on more than 8 million homes* from coast to coast, James Hardie® products are built to withstand the most extreme conditions. Enjoy the warm, natural character of wood with unprecedented peace of mind. It's easy to see what makes James Hardie the market leader.

Unique Formulation

Not all fiber cement is the same. Only James Hardie fiber cement products are Engineered for Climate®. Our unique formulations, combined with innovative product design and manufacturing processes, create two distinct substrates. Each substrate is precisely engineered to resist moisture, cracking, shrinking and swelling for increased durability and workability.

Finishing Technology

Revolutionary ColorPlus® Technology provides the ultimate in aesthetics and performance. Our innovative color process applies a consistent, baked-on finish that provides years of lasting beauty and fade resistance.

Complete Exterior

Diversified products defined by durability, lower maintenance, superior aesthetics and an array of design options. Provide homeowners peace of mind with exceptional warranties through a single manufacturer.

*Estimate based on total James Hardie siding sales through 2016 and average housing unit size.