

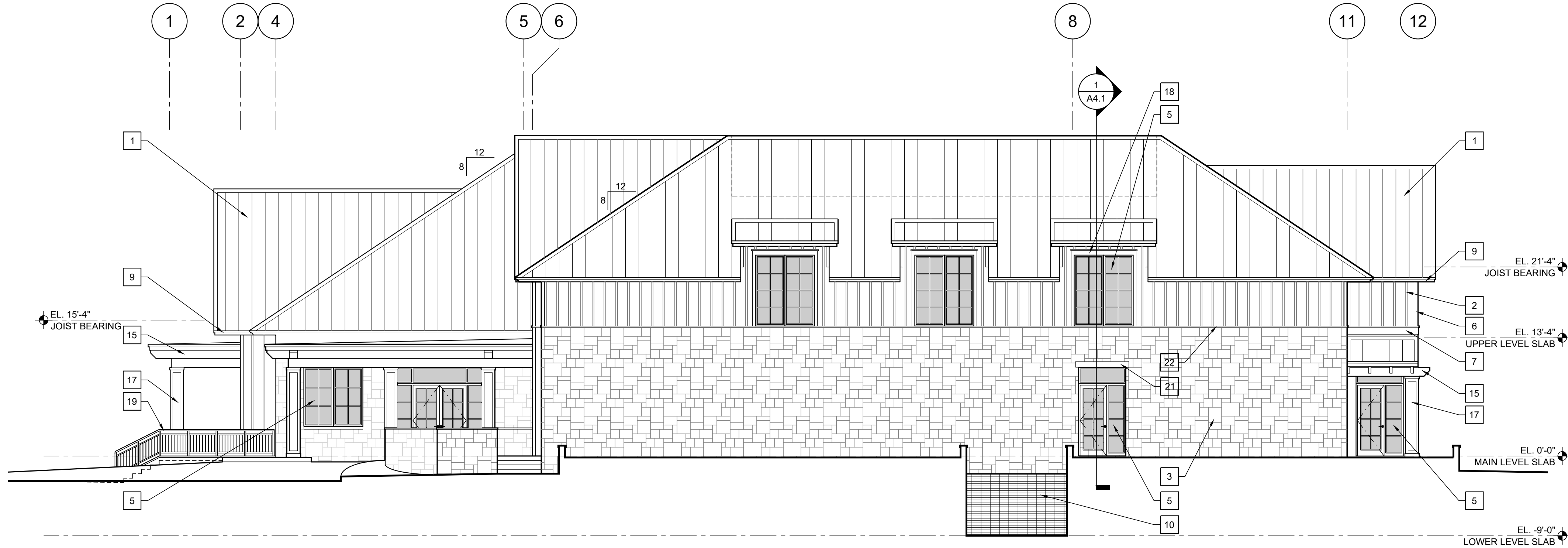






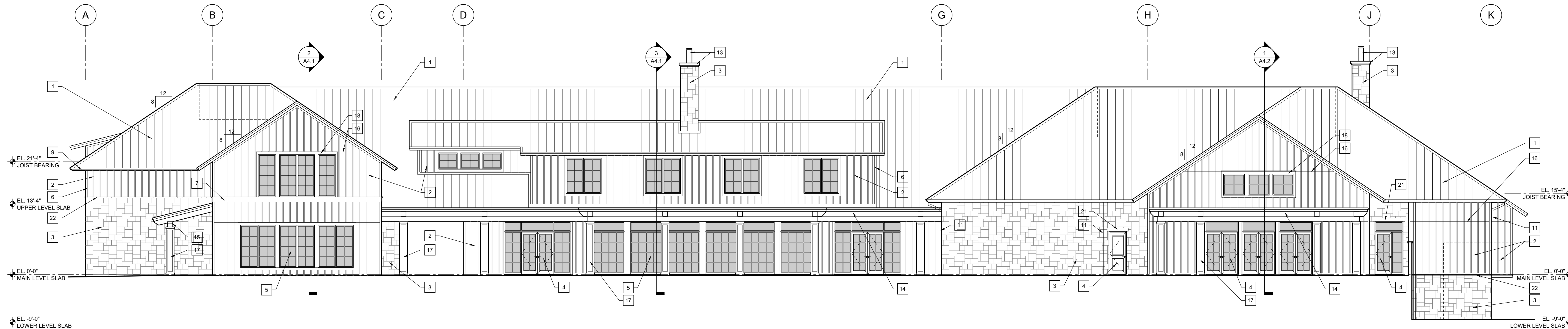
ELEVATION & SECTION KEY NOTES

- 1 STANDING SEAM METAL ROOF PANELS, DREXEL DMC175 1 1/2", 24 GAUGE THICKNESS, PREFINISHED GALVALUME STEEL, 16" PANEL, MULTI STRIATION DESIGN, COLOR: CHARCOAL GREY
- 2 FIBER CEMENT VERTICAL BOARD AND BATTEN SIDING, 16" PANEL, CEDARMILL TEXTURE, PAINTED (TBD).
- 3 CUT STONE VENEER, OLD HARBOR GREY BY NATURAL STONE VENEERS INTERNATIONAL. SET IN MASONRY VENEER INSTALLATION SYSTEM (MVIS) BY LATICRETE. MVIS TO CONSIST OF LATICRETE AIR & WATER BARRIER, HI BOND MASONRY VENEER MORTAR, AND POINTING MORTAR, COLOR TBD
- 4 DOOR ASSEMBLY, SEE SCHEDULE
- 5 WINDOW ASSEMBLY, SEE SCHEDULE
- 6 1 X 4 FIBER CEMENT TRIM, SMOOTH, PAINTED (TBD)
- 7 1 X 10 FIBER CEMENT TRIM, SMOOTH, PAINTED (TBD)
- 8 EXTERIOR WALL SCONCE. EF CHAPMAN FRESNO FRAMED MEDIUM SCONCE. FIXTURES TO BE PURCHASED BY OWNER AND INSTALLED BY CONTRACTOR.
- 9 2 X 8 ROOF FASCIA BOARD, PAINT (TBD)
- 10 OVERHEAD COILING DOOR, SEE SCHEDULE
- 11 4" X 4" PREFINISHED METAL DOWNSPOUT
- 12 6"D. X 4"H. PREFINISHED METAL BOX GUTTER
- 13 CUSTOM FABRICATED CHIMNEY CAP
- 14 1X FIBER CEMENT TRIM BOARD OVER LOW-SLOPE ROOF TRUSSES
- 15 FIBER CEMENT BEAM WRAP OVER STEEL STRUCTURE, MITER ALL OUTSIDE CORNERS, PAINT (TBD)
- 16 HORIZONTAL SEAM IN VERTICAL FIBER CEMENT SIDING, SEE DETAIL 3/A6.2
- 17 FIBER CEMENT COLUMN WRAP OVER 16" CONCRETE MASONRY UNIT COLUMN, SEE DETAIL X/A5.X
- 18 1 X 6 FIBER CEMENT TRIM, SMOOTH, AT WINDOW HEAD, TYPICAL
- 19 CUSTOM METAL GUARD AT 42" A.F.F.
- 20 CUSTOM METAL HANDRAIL AT 42" A.F.F.
- 21 6TH SPLIT STONE LINTEL AT DOOR/WINDOW HEAD, COLOR TBD, BY CORONADO STONE PRODUCTS
- 22 STONE SILL, 900 SERIES, COLOR TBD, BY CORONADO STONE PRODUCTS
- 23 PREFINISHED ALUMINUM HANDRAIL AT 36" A.F.F., BLACK
- 24 MANUFACTURED WOOD ROOF TRUSSES
- 25 R-30 OPEN CELL SPRAY-IN-PLACE ICYNENE INSULATION
- 26 1 X 6 TONGUE & GROOVE WOOD SOFFIT, PAINT
- 27 CONTINUOUS PRE-FINISHED DRIP FLASHING
- 28 5/8" GYPSUM WALLBOARD OVER 2 X 6 WOOD STUD FRAMING @ 16" O.C.
- 29 R-19 BATT INSULATION
- 30 5/8" MOISTURE-RESISTANT GYPSUM WALLBOARD OVER 1 1/2" METAL HAT CHANNELS @ 24" O.C.
- 31 R-6 CLOSED CELL SPRAY FOAM INSULATION
- 32 5/8" SUSPENDED GYPSUM WALLBOARD CEILING SYSTEM
- 33 1 1/2" THICK FIBER RIM BOARD, SEE STRUCTURAL
- 34 EXTERIOR PAVING, SEE HARDSCAPE PLANS
- 35 FINE TEXTURED STUCCO FINISH OVER 5/8" DENS GLASS SHEATHING OVER METAL STUD FRAMING
- 36 5/8" 2-COAT FINE TEXTURED STUCCO FINISH
- 37 PROVIDE SILL EXTENSION AS PART OF WINDOW PACKAGE AT ALL FIBER CEMENT WALL CONDITIONS
- 38 5/8" GYPSUM WALLBOARD OVER 1 5/8" METAL STUDS @ 16" O.C. OVER R-9 1 1/2" FOIL-FACED RIGID INSULATION
- 39 .060 TPO ROOF MEMBRANE, WHITE, FULLY ADHERED TO 5/8" PLYWOOD DECK
- 40 30# FELT UNDERLAYMENT OVER 5/8" EXTERIOR GRADE PLYWOOD DECK



A SOUTH ELEVATION

1/8" = 1'-0"



B EAST ELEVATION

1/8" = 1'-0"

REVISIONS:

08.01.19 General Addendum

SHEET TITLE:

EXTERIOR
ELEVATIONS

DATA:

PROJECT #: 18-182

DATE: 06.20.2019

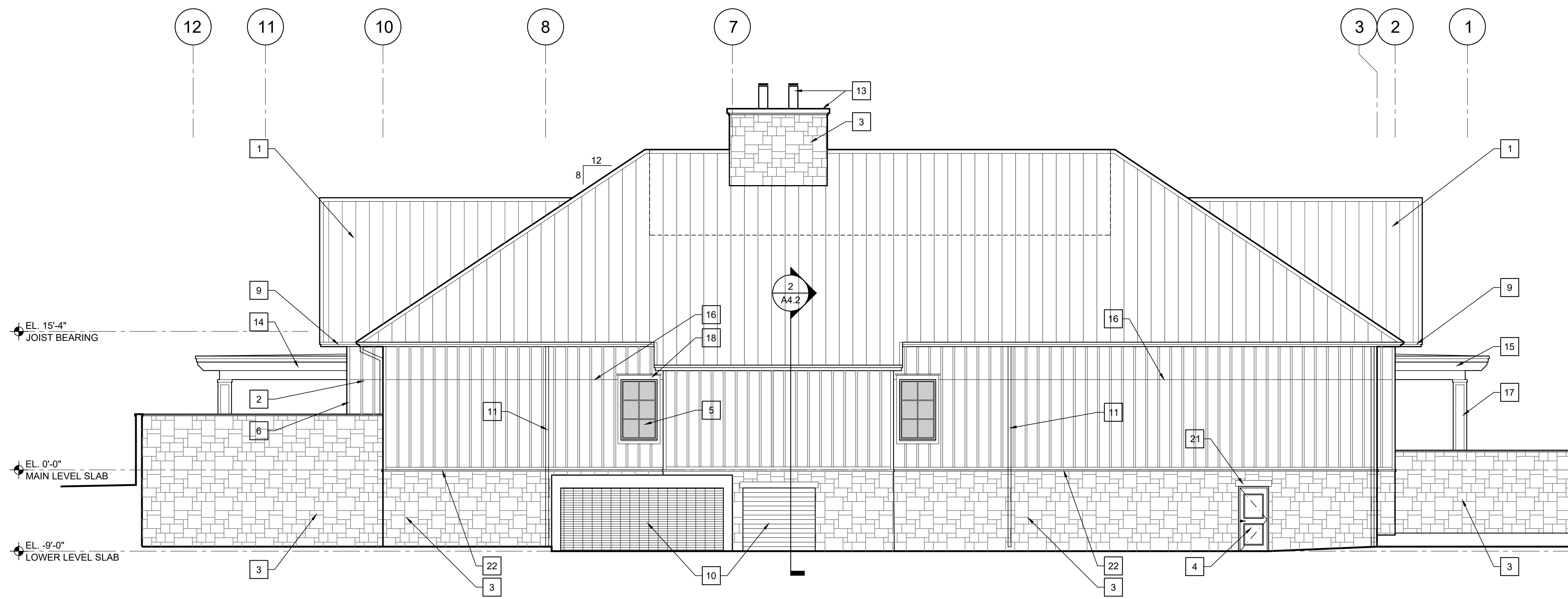
DRAWN BY:

FILE:

SHEET #:

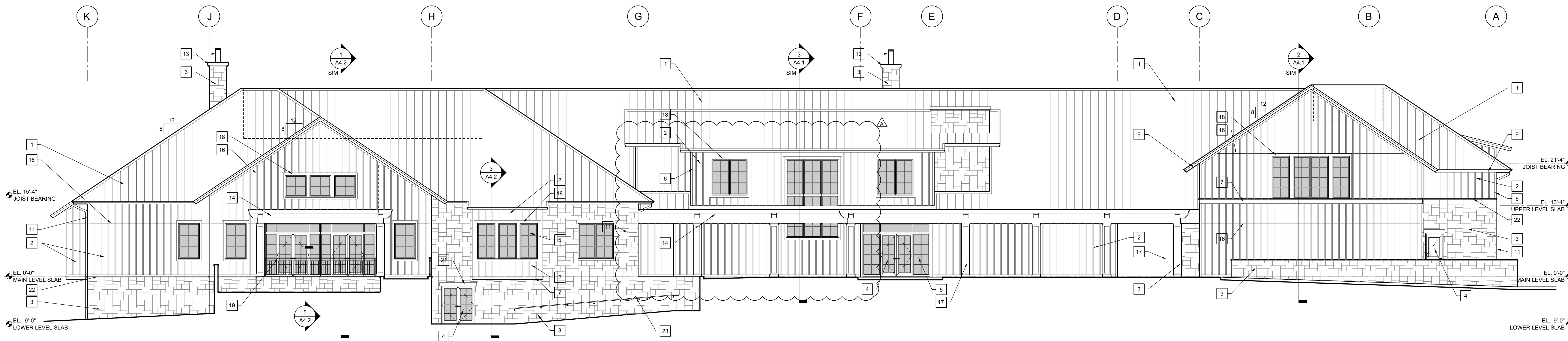
ELEVATION & SECTION KEY NOTES

- 1 STANDING SEAM METAL ROOF PANELS, DREXEL DMC175 1 1/2", 24 GAUGE THICKNESS, PREFINISHED GALVALUME STEEL, 16" PANEL, MULTI STRIATION DESIGN, COLOR: CHARCOAL GREY
- 2 FIBER CEMENT VERTICAL BOARD AND BATTEN SIDING, 16" PANEL, CEDARMILL TEXTURE, PAINTED (TBD).
- 3 CUT STONE VENEER, OLD HARBOR GREY BY NATURAL STONE VENEERS INTERNATIONAL. SET IN MASONRY VENEER INSTALLATION SYSTEM (MVIS) BY LATICRETE. MVIS TO CONSIST OF LATICRETE AIR & WATER BARRIER, HI BOND MASONRY VENEER MORTAR, AND POINTING MORTAR, COLOR TBD
- 4 DOOR ASSEMBLY, SEE SCHEDULE
- 5 WINDOW ASSEMBLY, SEE SCHEDULE
- 6 1 X 4 FIBER CEMENT TRIM, SMOOTH, PAINTED (TBD)
- 7 1 X 10 FIBER CEMENT TRIM, SMOOTH, PAINTED (TBD)
- 8 EXTERIOR WALL SCONCE. EF CHAPMAN FRESNO FRAMED MEDIUM SCONCE. FIXTURES TO BE PURCHASED BY OWNER AND INSTALLED BY CONTRACTOR.
- 9 2 X 6 ROOF FASCIA BOARD, PAINT (TBD)
- 10 OVERHEAD COILING DOOR, SEE SCHEDULE
- 11 4" X 4" PREFINISHED METAL DOWNSPOUT
- 12 6"D. X 4"H. PREFINISHED METAL BOX GUTTER
- 13 CUSTOM FABRICATED CHIMNEY CAP
- 14 1X FIBER CEMENT TRIM BOARD OVER LOW-SLOPE ROOF TRUSSES
- 15 FIBER CEMENT BEAM WRAP OVER STEEL STRUCTURE, MITER ALL OUTSIDE CORNERS, PAINT (TBD)
- 16 HORIZONTAL SEAM IN VERTICAL FIBER CEMENT SIDING, SEE DETAIL 3/A6.2
- 17 FIBER CEMENT COLUMN WRAP OVER 16" CONCRETE MASONRY UNIT COLUMN, SEE DETAIL X/A5.X
- 18 1 X 6 FIBER CEMENT TRIM, SMOOTH, AT WINDOW HEAD, TYPICAL
- 19 CUSTOM METAL GUARD AT 42" A.F.F.
- 20 CUSTOM METAL HANDRAIL AT 42" A.F.F.
- 21 6TH SPLIT STONE LINTEL AT DOOR/WINDOW HEAD, COLOR TBD, BY CORONADO STONE PRODUCTS
- 22 STONE SILL, 900 SERIES, COLOR TBD, BY CORONADO STONE PRODUCTS
- 23 PREFINISHED ALUMINUM HANDRAIL AT 36" A.F.F., BLACK
- 24 MANUFACTURED WOOD ROOF TRUSSES
- 25 R-30 OPEN CELL SPRAY-IN-PLACE ICYNENE INSULATION
- 26 1 X 6 TONGUE & GROOVE WOOD SOFFIT, PAINT
- 27 CONTINUOUS PRE-FINISHED DRIP FLASHING
- 28 5/8" GYPSUM WALLBOARD OVER 2 X 6 WOOD STUD FRAMING @ 16" O.C.
- 29 R-19 BATT INSULATION
- 30 5/8" MOISTURE-RESISTANT GYPSUM WALLBOARD OVER 1 1/2" METAL HAT CHANNELS @ 24" O.C.
- 31 R-6 CLOSED CELL SPRAY FOAM INSULATION
- 32 5/8" SUSPENDED GYPSUM WALLBOARD CEILING SYSTEM
- 33 1 1/2" THICK FIBER RIM BOARD, SEE STRUCTURAL
- 34 EXTERIOR PAVING, SEE HARDSCAPE PLANS
- 35 FINE TEXTURED STUCCO FINISH OVER 5/8" DENS GLASS SHEATHING OVER METAL STUD FRAMING
- 36 5/8" 2-COAT FINE TEXTURED STUCCO FINISH
- 37 PROVIDE SILL EXTENSION AS PART OF WINDOW PACKAGE AT ALL FIBER CEMENT WALL CONDITIONS
- 38 5/8" GYPSUM WALLBOARD OVER 1 5/8" METAL STUDS @ 16" O.C. OVER R-9 1 1/2" FOIL-FACED RIGID INSULATION
- 39 .060 TPO ROOF MEMBRANE, WHITE, FULLY ADHERED TO 5/8" PLYWOOD DECK
- 40 30# FELT UNDERLAYMENT OVER 5/8" EXTERIOR GRADE PLYWOOD DECK



A NORTH ELEVATION

1/8" = 1'-0"



B WEST ELEVATION

1/8" = 1'-0"



SEAL: [REDACTED]
Dennis M. Carr, AIA
FL Lic. No. AR0015756

A3.3