

TOWN OF BELLEAIR  
DEPARTMENT OF PUBLIC WORKS

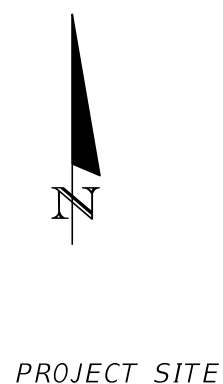
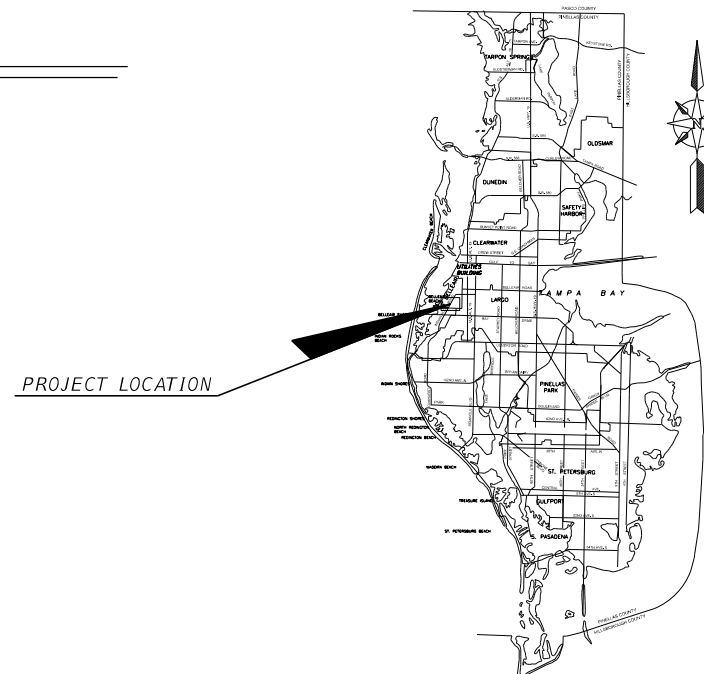
LANDSCAPE

PINELLAS PARK  
LANDSCAPE CONCEPTS



INDEX OF LANDSCAPE PLANS

SHEET NO.	SHEET DESCRIPTION
LD-1	KEY SHEET
LD-2	PLANT SCHEDULE
LD-3	GENERAL NOTES
LD-4	LANDSCAPE CONCEPT 1
LD-5	LANDSCAPE CONCEPT 2



TOWN OF BELLEAIR COMMISSIONERS

- |                           |                |
|---------------------------|----------------|
| MAYOR:                    | MIKE WILKINSON |
| DEPUTY MAYOR:             | TOM KUREY      |
| COMMISSIONER:             | COLEEN CHANEY  |
| COMMISSIONER:             | THOMAS NESSLER |
| COMMISSIONER:             | TOM SHELLY     |
| TOWN OF BELLEAIR MANAGER: | JP MURPHY      |
| TOWN PROJECT MANAGER:     | KEITH BODEKER  |

LANDSCAPE PLANS  
LANDSCAPE ARCHITECT OF RECORD:

DAVID M. BRYAN, R.L.A. NO. 6667353  
RSH, INC.  
1715 N. WESTSHORE BOULEVARD, SUITE 600  
TAMPA, FLORIDA 33607-3999  
(813) 289-5550  
CONTRACT NO. C9120  
VENDOR ID NO. F59-2986466

NOTE: THE SCALE OF THESE PLANS MAY HAVE CHANGED DUE TO REPRODUCTION.

MAY 2022

CONCEPTUAL LANDSCAPE PLANS  
NOT FOR CONSTRUCTION

FISCAL YEAR	SHEET NO.
-	LD-1

THE OFFICIAL RECORD OF THIS SHEET IS THE ELECTRONIC FILE DIGITALLY SIGNED AND SEALED UNDER RULE 61G15-23.004, F.A.C.

SYM	DESCRIPTION (BOTANICAL NAME / COMMON NAME; SIZE; SPACING; DETAILS) (SOIL ENHANCEMENT; REMOVAL DEPTH; SOIL ADDED; AMMENDMENT ADDED; SCARIFICATION DEPTH; UNIT)	MAX. MAINT. SIZE	REMARKS	UNIT	SHEET NUMBERS				TOTAL THIS SHEET		GRAND TOTAL CONCEPT 1A		GRAND TOTAL CONCEPT 1B			
					CONCEPT 1A		CONCEPT 1B		PLAN	FINAL	PLAN	FINAL	PLAN	FINAL	PLAN	FINAL
					PLAN	FINAL	PLAN	FINAL								
X	TREE REMOVAL -TBD	-	-	EA	5	5			10			5		5		
	SMALL PLANTS			EA												
MC	MUHLENBERGIA CAPILLARIS / MUHLY GRASS, #3 GAL; 20" X 20", FULL, MATCHED, 3.5' OC, CUT BACK IN LATE WINTER	NF	NATIVE		10	-			10			10		-		
HP	HAMELIA PATENS / LIME SIZZLER FIREBUSH, #3 GAL; 2' X 2', FULL, MATCHED, 3' OC, VARIEGATED, RED FLOWER, CUT BACK IN LATE WINTER	NF	NATIVE		49	244			293			49		244		
OS	ODONTONEMA STRICUTM / RED FIRESPIKE, FULL, MATCHED, #3 GAL; 24" - 30", 3' OC, CUT BACK IN LATE WINTER	NF	NATIVE		28	99			127			28		99		
PA	PLUMBAGO AURICULATA / IMPERIAL BLUE PLUMBAGO, #3 GAL; 18"X18", FULL, MATCHED, 3.5' OC	NF	NATIVE		39	-			39			39		-		
LM	LIRIOPE MUSCARI / SUPER BLUE LIRIOPE, 1 GAL; FULL, MATCHED, 12" OC	NF	ADAPTED		480	1307			1787			480		1307		
MS	MIMOSA STRIGILLOSA / SUNSHINE MIMOSA, 1 GAL., FULL, MATCHED 12" OC	NF	NATIVE						690			690		690		
ZP	ZAMIA PUMILIA / COONTIE, #3 GAL; 15"-18", FULL, MATCHED, 3' OC	NF	NATIVE		58	192			250			58		192		
VOD	VIBURNUM OBOVATUM 'Densa' / DWARF WALTERS VIBURNUM; #3 GAL; 24" PLUS, 3' OC	3' - 4' HEIGHT	NATIVE		20	20			40			20		20		
	LARGE PLANTS			EA												
LIN	LAGERSTROMIEA INDICA / NATCHEZ CRAPE MYRTLE, 100 GAL; STANDARD 14'-15' HEIGHT MATCHED, SPACING SHOWN ON PLANS	NF	ADAPTED		12	-			12			12		-		
SP	SABAL PALMETTO / SABAL PALM, 10', 14' AND 16' CT	NF	NATIVE		24	-			24			24		-		
	REGEN ROOTS, LOCATION OF CT AND SPACING SHOWN ON PLANS, SLICKS, EQUAL MIX OF CT HEIGHTS, FIELD GROWN															
CSP	CURVED SABAL PALMETTO / SABAL PALM, VARIOUS CT HEIGHTS - 14', 16' AND 18' CT	NF	NATIVE		3	-			3			3		-		
	REGEN ROOTS, SLICKS, FIELD GROWN															
OV	QUERCUS VIRGINIANA / SOUTHERN LIVE OAK, SPECIEMEN SIZE, FIELD GROWN, 22' - 24' HEIGHT, 6-7INCH CALIPER, ROOTS PLUS GROWER	NF	NATIVE		-	1			1			-		1		
-	5' WIDE CONCRETE SIDEWALK, THICKENED EDGE, MEDIUM BROOM FINISH	-	-	CY	42	30			72			42		30		
	ADA COMPLIANT (QUANTITY FIGURED WITH 4" THICKNESS)															
-	CONCRETE BENCH PAD, MEDIUM BROOM FINISH, ADA COMPLIANT	-	-	EA	3	1			4			3		1		
	(APPROX. SQUARE FEET EACH = 56 SF X 3 PADS, FIGURED WITH 4" THICKNESS)															
-	CONCRETE PICNIC PAD, MEDIUM BROOM FINISH, ADA COMPLIANT	-	-	EA	1	1			1			1		1		
	(APPROX. SQUARE FEET = 225 SF X 1 PAD, FIGURED WITH 4" THICKNESS)															
-	8' BENCH - TOWN OF BELLEAIR STANDARD - TBD	-	-	EA	3	1			4			3		1		
-	TRASH RECEPTACLE - TOWN OF BELLEAIR STANDARD - TBD	-	-	EA	3	1			4			3		1		

LANDSCAPE PLANTS ABBREVIATION KEY

- CT - CLEAR TRUNK
- GAL - GALLON SIZE
- NF - NATURAL FORM
- REGEN - REGENERATED ROOTS
- TBD - TO BE DETERMINED
- EA - EACH
- LF - LINEAR FEET
- SF - SQUARE FEET
- CY - CUBIC YARDS

RS&H, Inc.  
1715 N. Westshore Blvd., Suite 600  
Tampa, Florida 33607  
(813)289-5550 FAX: (813)289-0263  
  
www.rsandh.com  
FL.Cert.Nos: AAC001886  
EB0005620 LCC000210



PUBLIC WORKS DEPARTMENT  
901 PONCE DE LEON BLVD.  
BELLEAIR, FL 33756

PINELLAS PARK  
LANDSCAPE CONCEPT

SUB-CONSULTANTS

APPROVED BY:

DAVID M. BRYAN, R.L.A.  
FLA. REG. NO. 6667353  
DATE: \_\_\_\_\_

REVISIONS

NO.	DESCRIPTION	DATE

DATE ISSUED: MAY 2022

REVIEWED BY: RRS

DRAWN BY: DMB

DESIGNED BY: DMB

HORIZONTAL SCALE:

VERTICAL SCALE:

AEP NO.: -

SHEET TITLE

PLANT SCHEDULE

SHEET NUMBER

LD-2

GENERAL NOTES:

1. THE EXACT LOCATION OF ALL EXISTING STRUCTURES, UNDERGROUND UTILITIES, DRAINAGE STRUCTURES, EXISTING UNDERGROUND SPRINKLERS, AND PIPE MAY NOT BE AS INDICATED ON DRAWINGS. BASE FILES AND BACKGROUND INFORMATION DEPICTED ON THE PLAN. SHEETS ARE TAKEN FROM VARIOUS SOURCES. A PROJECT SPECIFIC TOPOGRAPHIC AND RIGHT-OF-WAY SURVEY WAS NOT PERFORMED. CONTACT SUNSHINE STATE ONE- CALL AS REQUIRED BY CHAPTER 556 OF THE FLORIDA STATUTES PRIOR TO ANY EXCAVATION ACTIVITY. FIELD LOCATE ALL UTILITIES, DRAINAGE STRUCTURES, LIGHT POLES, SIGNS, AND OTHER VISIBLE STRUCTURES PRIOR TO INSTALLATION OF ALL PROPOSED IMPROVEMENTS CONTAINED WITHIN THE CONTRACT DOCUMENTS. NOTIFY THE ENGINEER IMMEDIATELY OF ANY POSSIBLE CONFLICTS BETWEEN PROPOSED IMPROVEMENTS AND UTILITIES, SIGNS, AND/OR OTHER STRUCTURES.
2. ALL EXISTING FACILITIES NOTED ON PLANS ARE BASED ON AERIAL IMAGERY AND FIELD INVESTIGATION. AS A RESULT, THESE FACILITIES HAVE BEEN LABELED AS "APPROX." (APPROXIMATE).
3. THE APPROXIMATE LOCATION OF UTILITIES ARE SHOWN FOR INFORMATION PURPOSES ONLY. DEPTH OF UTILITIES ARE UNKNOWN. FIELD VERIFY EXACT LOCATIONS AND DEPTHS OF UTILITIES PRIOR TO BEGINNING ANY DIRECTIONAL DRILLING OR EXCAVATION ACTIVITIES.
4. ALL EXISTING UTILITIES ARE TO REMAIN IN PLACE. NOTIFY OWNER OF ANY CONFLICTS.
5. ALL CONCRETE SIDEWALKS, BENCH PADS, AND PICNIC TABLE PADS SHALL MEET ADA COMPLIANCE.
6. SIDEWALKS SHALL MEET THE REQUIREMENTS OF FDOT FY 2022-23 STANDARD PLANS, CONCRETE SIDEWALK, INDEX #522-001.
7. TREE PROTECTION SHALL MEET THE REQUIREMENTS OF FDOT FY 2022-23 STANDARD PLANS, TREE PROTECTION AND PRESERVATION, INDEX 110-100.
8. A CERTIFIED ARBORIST SHALL BE ON SITE AND SUPERVISE THE REMOVAL OF TREES AND / OR ROOT PRUNING FOR THE NEW PLANT MATERIAL, CONCRETE SIDEWALKS, BENCH PAD OR PICNIC TABLE PAD.
9. LANDSCAPE INSTALLATION SHALL MEET THE REQUIREMENTS OF FDOT FY 2022-23 STANDARD PLANS, LANDSCAPE INSTALLATION, INDEX 580-001.

LANDSCAPE NOTES:

1. ALL PLANT MATERIAL SHALL BE INSTALLED AND MAINTAINED AT FLORIDA NO. 1 PER THE LATEST EDITION OF FLORIDA GRADES AND STANDARDS FOR NURSERY PLANTS.
2. SHOULD DISCREPANCIES BETWEEN PLANS AND QUANTITIES LISTED IN THE PLANT SCHEDULE, THE PLANS SHALL CONTROL. CONTRACTOR TO REPORT ANY DISCREPANCIES TO THE OWNER AND LANDSCAPE ARCHITECT PRIOR TO CONTRACT AWARD AND COMMENCEMENT OF WORK.
3. CONTRACTOR SHALL CONFIRM AVAILABILITY OF ALL SPECIFIED PLANTS AND SOILS MATERIALS PRIOR TO BEGINNING WORK.
4. CONTAINER SIZES NOTED IN THE PLANT SCHEDULE SHALL BE INCREASED IF NECESSARY TO PROVIDE SIZES OF PLANTS SPECIFIED.
5. THE LOCATION OF PLANTS, AS SHOWN IN THESE PLANS, ARE APPROXIMATE. FINAL LOCATIONS MAY BE ADJUSTED TO ACCOMMODATE UNFORESEEN FIELD CONDITIONS. TO COMPLY WITH SAFETY SETBACKS, UTILITIES OR AS DIRECTED. LOCATIONS FOR REVIEW IN THE FIELD TO THE EXTENT REQUESTED BY THE OWNER PRIOR TO INSTALLATION FOR REVIEW AND COMMENT.
6. ALL AREAS TO RECEIVE NEW PLANTINGS SHALL BE TREATED WITH TWO APPLICATIONS OF ROUND UP OR EQUIVALENT PRIOR TO INSTALLATION. CONTRACTOR SHALL SUBMIT PRODUCT LABELS FOR REVIEW AND APPROVAL BY THE OWNER PRIOR TO APPLICATION. TREAT AREAS PER MANUFACTURE RES RECOMMENDATIONS AND FOLLOW TIME LINE RECOMMENDATIONS FOR PLANTING AFTER APPLICATIONS.
7. ANY DAMAGE FROM VEGETATIVE REMOVAL OR PLANT INSTALLATION THAT AFFECTS ANY IMPROVEMENTS INCLUDING BUT NOT LIMITED TO ROADWAY, STRUCTURES, UTILITIES, OFF- SITE CONDITIONS, ETC. SHALL BE RESTORED TO THEIR PRE- EXISTING CONDITIONS AT NO ADDITIONAL COST TO THE OWNER.
8. PINE MULCH SHALL BE FREE OF WEEDS OR ANY NOXIOUS ELEMENTS DETRIMENTAL TO PLANT HEALTH AND SHALL BE INSTALLED SO AS NOT TO CREATE MAINTENANCE CONCERNS. MULCH APPLICATION SHALL BE UNIFORMLY APPLIED TO A MINIMUM THICKNESS OF 3" IN THE PLANT BEDS AND 2" FOR GROUND COVERS. 2 APPLICATIONS OF MULCH SHALL BE APPLIED DURING THE WARRANTY PERIOD.
9. A GENERAL WATERING SCHEDULE SHALL BE PROVIDED BY THE CONTRACTOR TO ENSURE THE HEALTHY ESTABLISHMENT OF ALL PLANT MATERIAL.
10. ALL PLANT MATERIAL SHALL BE WARRANTED BY THE CONTRACTOR FOR A PERIOD OF 12 MONTHS BEGINNING AFTER FINAL ACCEPTANCE BY THE OWNER. PLANT MATERIAL THAT FALLS BELOW FLORIDA GRADE #1 DURING THE WARRANTY PERIOD SHALL BE REPLACED AT NO COST TO THE OWNER.
11. ALL COSTS FOR HAND WATERING SHALL BE INCLUDED IN THE UNIT COST OF THE PLANT MATERIAL.
12. ALL PLANT MATERIAL SHALL HAVE NO LICHENS, ALGAE, OR FUNGI ATTACHED ON MORE THAN 10% OF PLANT. PLANT MATERIAL SHALL HAVE NO SPANISH MOSS (TILLANDSIA USNEOIDES) ON OR WITHIN PLANT CANOPY.
13. PROTECT PLANT MATERIAL FROM SUN, WIND, AND OTHER DAMAGE DURING TRANSPORT AND DELIVERY.
14. RESTORE ALL LANDSCAPE AREAS TO THE ORIGINAL GRADES AND SLOPES. ANY EXPOSED SOIL AND DISTURBED AREAS CREATED AS A RESULT OF CONSTRUCTION ACTIVITIES SHALL BE SODDED WITH ST. AUGUSTINE SOD. REMOVE FROM THE PROJECT SITE ALL EXCESS SOIL VOLUME RESULTING FROM THE INSTALLATION OF PLANT MATERIALS AND DISPOSE OF THIS SOIL IN ACCORDANCE WITH LOCAL REGULATIONS.
15. SUBMITTALS:  
 SUBMIT THE FOLLOWING TO THE ENGINEER FOR REVIEW AND APPROVAL.  
 A. PLANT MATERIAL PHOTOS - PHOTOS SHALL INCLUDE ALL PLANT MATERIAL, CLEARLY DEPICT THE HEIGHT/SPREAD, ROOT BALL MEASUREMENTS, AND SHOW EVIDENCE OF REGENERATED ROOTS (WHEN APPLICABLE) AND NEW LEAVES. PHOTOS SHALL ALSO INCLUDE THE SOURCE/LOCATION, DATE TAKEN, AND HAVE A LEGIBLE SCALE IN VIEW IN ORDER TO DETERMINE THE HEIGHT/SPREAD. A PHOTO WILL BE SUBMITTED FOR EACH SPECIES AND WILL SHOW THE MINIMUM ACCEPTABLE CHARACTERISTICS OF EACH SPECIES.  
 B. SAMPLE OF MULCH MATERIAL.  
 C. AS- BUILT DRAWINGS - SUBMIT CERTIFIED AS- BUILT PLANS TO THE ENGINEER WITHIN 14 DAYS FROM DEPARTMENT ACCEPTANCE OF THE INSTALLATION PERIOD.

RS&H, Inc.  
 1715 N. Westshore Blvd., Suite 600  
 Tampa, Florida 33607  
 (813)289-5550 FAX: (813)289-0263  
 www.rsandh.com  
 FL.Cert.Nos: AAC001886  
 EB0005620 LCC000210



PUBLIC WORKS DEPARTMENT  
 901 PONCE DE LEON BLVD.  
 BELLEAIR, FL 33756

PINELLAS PARK  
 LANDSCAPE CONCEPT

SUB-CONSULTANTS

APPROVED BY:

DAVID M. BRYAN, R.L.A.  
 FLA. REG. NO. 6667353  
 DATE: \_\_\_\_\_

REVISIONS

NO.	DESCRIPTION	DATE

DATE ISSUED: MAY 2022

REVIEWED BY: RRS

DRAWN BY: DMB

DESIGNED BY: DMB

HORIZONTAL SCALE:

VERTICAL SCALE:

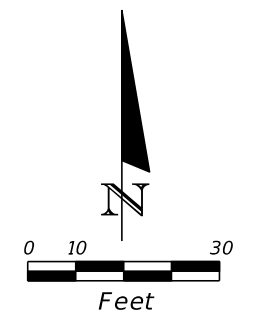
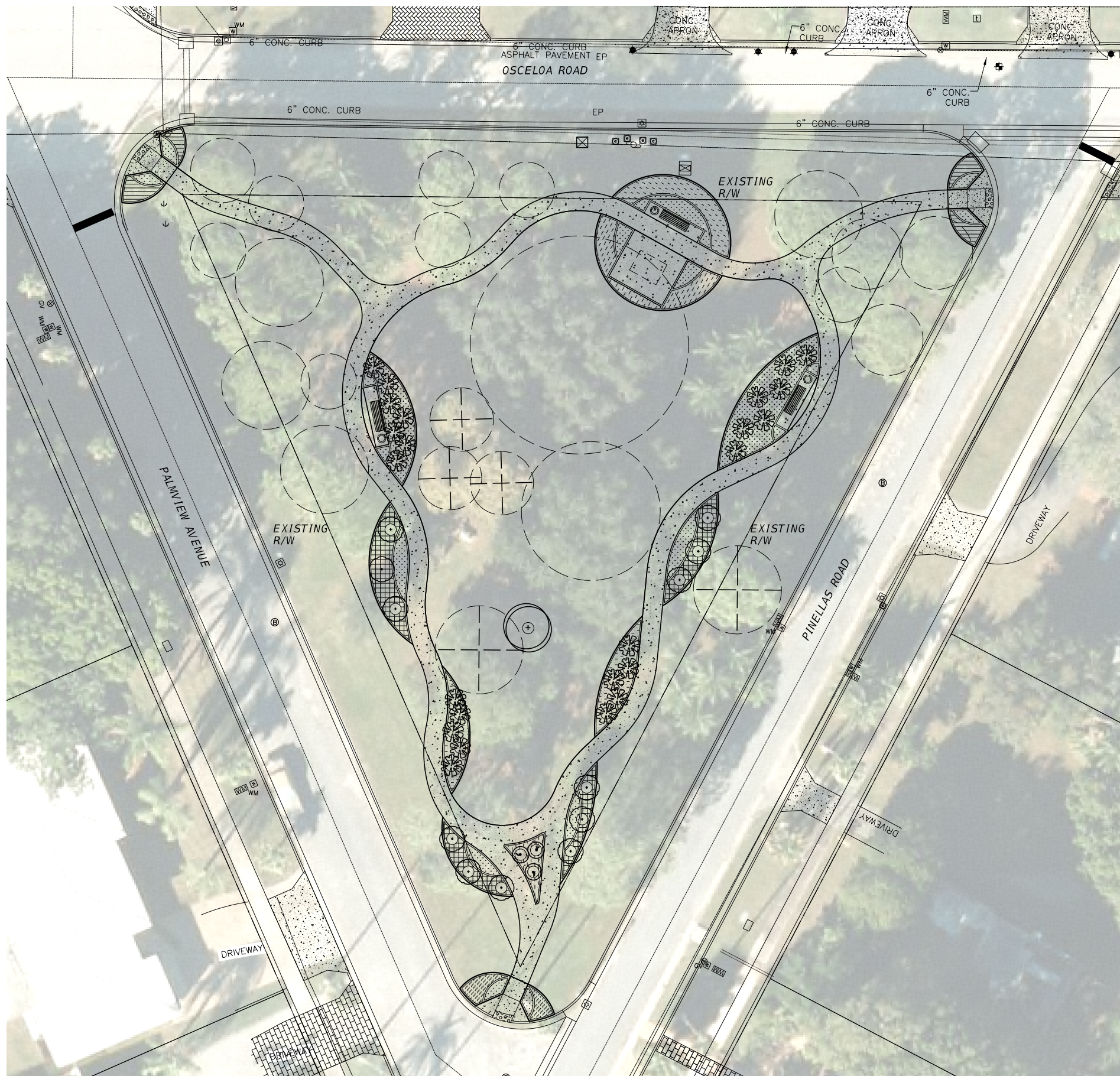
AEP NO.: -

SHEET TITLE

GENERAL NOTES

SHEET NUMBER

LD-3



**LEGEND**

- EXISTING TREES (CYPRESS, OAK, PINE)
- ADA COMPLIANT CONCRETE PAD WITH 8' BENCH AND TRASH RECEPTACLE
- ADA COMPLIANT CONCRETE PAD WITH ADA COMPLIANT PICNIC TABLE
- ADA COMPLIANT 5' WIDE, THICKENED EDGE CONCRETE WALK MEDIUM BROOM FINISH PROVIDE JOINT LAYOUT TO OWNER PRIOR TO INSTALLATION
- (CSP) CURVED SABAL PALMS VARIOUS CLEAR TRUNK 14', 16' AND 18' WITH MULCH RING
- (SP) SABAL PALMS VARIOUS CLEAR TRUNK 10', 14' AND 16' WITH MULCH RING
- (LIN) NATCHEZ CRAPE MYRTLE 100 GAL., 14'-15' HEIGHT STANDARD, MATCHED WITH MULCH RING
- (QV) SPECIMEN LIVE OAK FIELD GRWON, 22'-24' HEIGHT WITH MULCH RING
- (ZP) COONTIE, 3 GAL., FULL, MATCHED 3' O.C. SPACING
- (LM) SUPER BLUE LIRIOPE, 1 GAL., FULL, MATCHED 12" O.C. SPACING
- (HP) LIME SIZZLER FIREBUSH 3 GAL., FULL, MATCHED 3' O.C. SPACING
- (VDO) DWARF WALTER'S VIBURNUM 3 GAL., FULL, MATCHED 3' O.C. SPACING
- (PA) BLUE PLUMBAGO 3 GAL., FULL, MATCHED 3.5' O.C. SPACING
- (OS) FIRESPIKE 3 GAL., FULL, MATCHED 3' O.C. SPACING
- (MC) MUHLY GRASS 3 GAL., FULL, MATCHED 3.5' O.C. SPACING
- EXISTING TREE TO BE REMOVED  
3 CYPRESS  
2 PINE

RS&H, Inc.  
1715 N. Westshore Blvd., Suite 600  
Tampa, Florida 33607  
(813)289-5550 FAX: (813)289-0263  
www.rsandh.com  
FL.Cert.Nos: AAC001886  
EB0005620 LCC000210



PUBLIC WORKS DEPARTMENT  
901 PONCE DE LEON BLVD.  
BELLEAIR, FL 33756

**PINELLAS PARK  
LANDSCAPE CONCEPT**

SUB-CONSULTANTS

APPROVED BY:

DAVID M. BRYAN, R.L.A.  
FLA. REG. NO. 6667353  
DATE: \_\_\_\_\_

REVISIONS

NO.	DESCRIPTION	DATE

DATE ISSUED: MAY 2022

REVIEWED BY: RRS

DRAWN BY: DMB

DESIGNED BY: DMB

HORIZONTAL SCALE:

VERTICAL SCALE:

AEP NO.: -

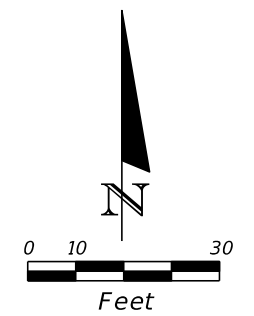
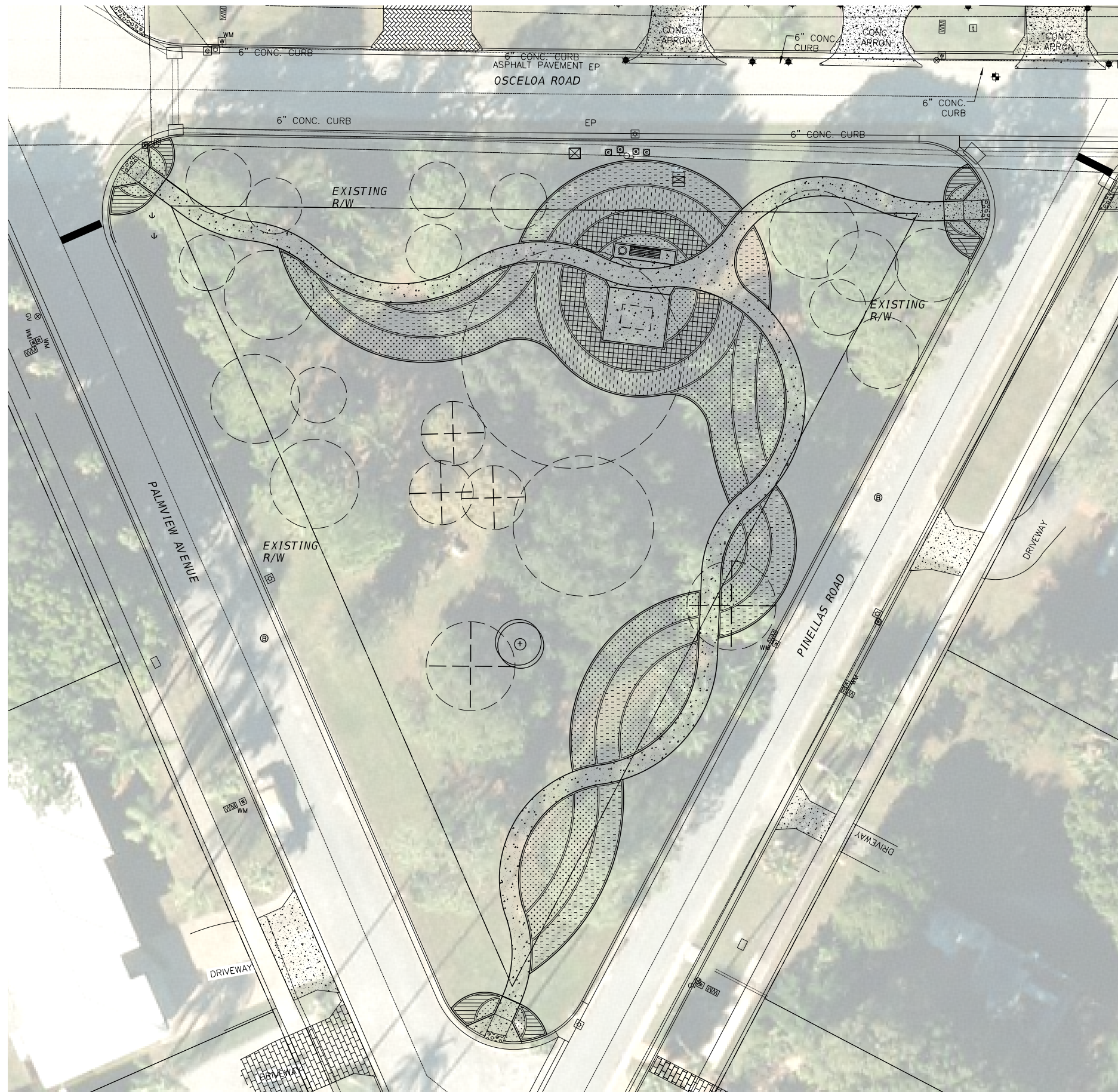
SHEET TITLE

LANDSCAPE CONCEPT 1A

SHEET NUMBER

LD-4

THE OFFICIAL RECORD OF THIS SHEET IS THE ELECTRONIC FILE DIGITALLY SIGNED AND SEALED UNDER RULE 61G15-23.004, F.A.C.



**LEGEND**

- EXISTING TREES (CYPRESS, OAK, PINE)
- ADA COMPLIANT CONCRETE PAD WITH 8' BENCH AND TRASH RECEPTACLE
- ADA COMPLIANT CONCRETE PAD WITH ADA COMPLIANT PICNIC TABLE
- ADA COMPLIANT 5' WIDE, THICKENED EDGE CONCRETE WALK MEDIUM BROOM FINISH PROVIDE JOINT LAYOUT TO OWNER PRIOR TO INSTALLATION
- (QV) SPECIMEN LIVE OAK FIELD GRWON, 22'-24' HEIGHT WITH MULCH RING
- (ZP) COONTIE, 3 GAL., FULL, MATCHED 3' O.C. SPACING
- (LM) SUPER BLUE LIRIOPE, 1 GAL., FULL, MATCHED 12" O.C. SPACING
- (HP) LIME SIZZLER FIREBUSH 3 GAL., FULL, MATCHED 3' O.C. SPACING
- (VDO) DWARF WALTER'S VIBURNUM 3 GAL., FULL, MATCHED 3' O.C. SPACING
- (MS) MIMOSOA - POWDER PUFF 1 GAL., FULL, MATCHED 12" O.C. SPACING
- (OS) FIRESPIKE 3 GAL., FULL, MATCHED 3' O.C. SPACING
- EXISTING TREE TO BE REMOVED  
3 CYPRESS  
2 PINE

RS&H, Inc.  
1715 N. Westshore Blvd., Suite 600  
Tampa, Florida 33607  
(813)289-5550 FAX: (813)289-0263  
www.rsandh.com  
FL.Cert.Nos: AAC001886  
EB0005620 LCC000210



PUBLIC WORKS DEPARTMENT  
901 PONCE DE LEON BLVD.  
BELLEAIR, FL 33756

**PINELLAS PARK  
LANDSCAPE CONCEPT**

SUB-CONSULTANTS

APPROVED BY:

DAVID M. BRYAN, R.L.A.  
FLA. REG. NO. 6667353  
DATE: \_\_\_\_\_

REVISIONS

NO.	DESCRIPTION	DATE

DATE ISSUED: MAY 2022

REVIEWED BY: RRS

DRAWN BY: DMB

DESIGNED BY: DMB

HORIZONTAL SCALE:

VERTICAL SCALE:

AEP NO.: -

SHEET TITLE

LANDSCAPE CONCEPT 1B

SHEET NUMBER

LD-5

THE OFFICIAL RECORD OF THIS SHEET IS THE ELECTRONIC FILE DIGITALLY SIGNED AND SEALED UNDER RULE 61G15-23.004, F.A.C.